



1990

PETRVLS

POMEROL

Grand Vin



MIS EN BOUTEILLES AU CHATEAU
PROPRIETAIRE A POMEROL (GIRONDE) FRANCE
Mme L. P. LACOSTE-LOUBAT

...TION POMEROL CONTRÔLÉE

2108 d 1



Fine Wine & Spirits

25 JULY 2018 WELLINGTON

Wednesday 25 July - 4pm start

Lot W1 - W310

French Red: Lot W1 - W56

French White, Champagne & Sparkling: Lot W57 - W96

Other Countries (Italian, Austrian, Spanish, German, Californian): Lot W97 - W123

Australian: Lot W124 - W203

New Zealand Red: Lot W204 - W252

New Zealand White: Lot W253 - W278

Dessert: Lot W279 - W288

Port: Lot W289 - W296

Spirits & Liqueurs: Lot W297 - W310

Absentee Bidding

If you are unable to attend the auction you may submit an absentee bid (form at reverse or online www.dunbarsloane.com) Telephone bidding can be arranged on lots over \$500 in value. Note we assume you have received a condition report or inspected the item prior to bidding. To register for this service, contact our office. Telephone lines are limited and are procured on a first registered basis. We accept no responsibility if for any reason we are unable to contact you, and for this reason encourage clients to leave a covering bid.

Absentee bids on wine lots are to be left per bottle (excluding premium)

Buyers Premium

There is a buyers premium of 17% + GST (19.55%) added to the hammer price.

Wellington Viewing

On view in conjunction with our
Antique & Decorative Arts Auction
(refer to p.1. for details)
Tuesday 24 July 9am – 5pm
Wednesday 25 July 9am – 4pm

Location/Enquiries

7 Maginnity Street, Wellington 6140
PO Box 224, Wellington 6140
P +64 4 472 1367
F +64 475 7389
E info@dunbarsloane.co.nz

www.dunbarsloane.com

FRENCH RED

BORDEAUX

W1

3 bottles Ch. Cissac Gironde Cru Bourgeois L. Vialard 1970 (high shoulder, marks to labels)

W2

1 bottle Ch. Les Carmes Haut Brion Grand Vin de Graves 1974 (high shoulder, damage to label)

W3

1 bottle Ch. La Gaffeliere St Emilion 1st Grand Cru Classe 1976 (low neck, marks to label)

W4

2 bottles Ch. Potensac Medoc Delon Liquard 1980 (low neck, marks to label)

W5

2 bottles Ch. La Lagune Haut Medoc 1981 (low neck)

W6

2 bottles Ch. La Lagune Haut Medoc 1981 (low neck, slight damage to labels)

W7

2 bottles Ch. La Lagune Haut Medoc 1981 (middle to high shoulder, slight marks to label)

W8

1 bottle Ch. Pichon Longueville Comtesse De Lalande, Grand Cru Classe, Pauillac 1983 (low neck, minor marks to label)

W9

1 bottle Ch. Longueville Pauillac-Medoc, au Baron de Pichon-Longueville 1988 (middle neck)

W10

2 bottles Grand Vin de Leoville du Marquis de Las Cases Recolte 1983, St. Julien (low neck, minor damage to labels)

W11

2 bottles Grand Vin de Leoville du Marquis de Las Cases Recolte 1983, St. Julien (low neck, minor marks to labels)

W12

2 bottles Grand Vin de Leoville du Marquis de Las Cases Recolte 1983, St. Julien (low to middle neck, minor marks to labels)

W13

1 bottle Ch. La Mission Haut Brion Graves Cru Classe 1983 (high shoulder, stains to label)
\$250 - 320

W14

1 bottle Ch. La Mission Haut-Brion 2003 (high neck, very minor damage to label)

W15

1 bottle Ch. Calon-Segur Grand Cru Classe St. Estephe ???0 (label ripped where date is except "0") (middle neck, damage to label)

W16

1 bottle Ch. Figeac Premier Grand Cru Classe St Emilion 1990 (low neck)
\$180 - 220

W17

1 bottle Ch. Phelan Segur St. Estephe 1996 (high neck)

W18

1 bottle Ch. Haut-Brion Pessac-Leognan 1997 (minor stains to label)
\$300 - 350

W19

1 bottle Ch. Haut-Brion Pessac-Leognan 2003 (minor marks to label)
\$320 - 350

W20

1 bottle Ch. Petrus Pomerol Grand Vin 1990 (middle neck)
\$3,200 - 4,500

W21

1 bottle Ch. Mouton Rothschild Pauillac 1985 (high shoulder, very minor damage to label)
\$450 - 500

W22

1 bottle Ch. Mouton Rothschild Pauillac 2004, bottle is signed to celebrate the 100th Anniversary
\$350 - 400

W23

1 bottle Les Forts De Latour Pauillac 2004 (middle neck)

W24

1 bottle Les Forts De Latour Pauillac 2004 (middle neck)

W25

1 bottle Les Forts De Latour Pauillac 2005 (middle neck)

W26

1 bottle Les Forts De Latour Pauillac 2005 (middle neck, minor marks to label)

W27

1 bottle Les Forts De Latour Pauillac 2005 (middle neck)

W28

1 bottle Ch. Prieure-Lichine Margaux 2006 (middle neck, minor marks to label)

W29

1 bottle Ch. Haut Condissas Medoc Prestige 2006 (middle neck)

W30

3 bottles Ch. Lagrange St. Julien 2005 (middle neck)

W31

2 bottles Ch. Lagrange St. Julien 2006 (middle neck)

W32

2 bottles Ch. Duhart-Milon Domaines Barons De Rothschild (Lafite) Pauillac 2005 (middle neck)

W33

1 bottle Ch. Ducru-Beaucaillou St. Julien 2004

W34

1 bottle Ch. Lafite Rothschild Pauillac 1976 (high shoulder, label badly damaged)
\$500 - 600

W35

1 bottle Ch. Lafite Rothschild Pauillac 2002 (middle neck)
\$500 - 600

W36

1 bottle Ch. Lafite Rothschild Pauillac 2005 (middle neck)
\$600 - 900

W37

1 bottle Ch. Lafite Rothschild Pauillac 2005 (low neck)
\$600 - 900

W38

1 bottle Ch. Lafite Rothschild Pauillac 2005 (middle neck)
\$600 - 900

W39

1 bottle Ch. Lafite Rothschild Pauillac 2005 (middle neck)
\$600 - 900

W40

1 bottle Ch. Lafite Rothschild Pauillac 2005 (high neck)
\$600 - 900

W41

1 bottle Ch. Lafite Rothschild Pauillac 2005 (middle neck)
\$600 - 900

W42

1 bottle Ch. Lafite Rothschild Pauillac 2005 (middle neck)
\$600 - 900

W43

1 bottle Ch. Lafite Rothschild Pauillac 2005 (middle neck)
\$600 - 900

W44

1 bottle Ch. Lafite Rothschild Pauillac 2005 (middle neck)
\$600 - 900



W45

1 bottle Ch. Lafite Rothschild Pauillac 2005 (middle neck)
\$600 - 900

W46

1 bottle Ch. Lafite Rothschild Pauillac 2005 (low neck)
\$600 - 900

W47

1 bottle Ch. Lafite Rothschild Pauillac 2005 (middle neck)
\$600 - 900

W48

1 bottle l'Hospitalet de Gazin Pomerol 2011

RHONE

W49

1 bottle Paul Jaboulet Aine Hermitage La Chapelle 1985 (level down, very minor marks to label)

W50

1 bottle Bourgogne Cote Chalonnaise La Digoine Bouzeron 1989 (staining to label)

W51

1 bottle Domaine Armand Rousseau Pere & Fils, Ruchottes Chambertin Grand Cru, Clos des Ruchottes, Monopole 1995
\$450 - 550

W52

2 bottles E. Guigal Hermitage 2002 (very minor damage to labels)

W53

1 bottle Yann Chave Crozes-Hermitage Tete De Cuvee 2003 (minor marks to label)

W54

1 bottle Domaine Charvin Cotes-du-Rhone 2016 (best vintage last 50 years)

BURGUNDY

W55

1 bottle Domaine Denis Bachelet Givrey-Chambertin "Les Corbeaux" Vieilles Vignes (very old vines) 2010
\$180 - 220

W56

1 bottle Domaine Denis Bachelet Givrey-Chambertin "Les Corbeaux" Vieilles Vignes (very old vines) 2010
\$180 - 220

FRENCH WHITE

W57

1 bottle Vincent Dauvissat Chablis Premier Cru "La Forest" 2014

CHAMPAGNE

W58

1 bottle Bollinger R.D. Extra Brut 1985
\$300 - 400

W59

1 bottle Bollinger Special Cuvee Brut NV (in box)

W60

1 bottle Pol Roger Brut Cuvee Sir Winston Churchill 1988
\$280 - 350

W61

1 bottle Pol Roger 'Cuvee Sir Winston Churchill' Vintage 2004 (sealed presentation box)
\$220 - 280

W62

1 bottle Pol Roger 'Vintage Rose' Vintage 2008 (presentation boxed)

W63

3 bottles Pol Roger Reserve Brut NV

W64

1 bottle Krug Brut 1989
\$350 - 400

W65

1 bottle Krug Vintage 2002 (sealed presentation box) (J Robinson 20/20, Parker 100)
\$430 - 500

W66

1 bottle Krug Brut Grande Cuvee NV (in presentation box)

W67

1 bottle Clos des Goisses Philipponnat Brut 1989 (in wooden presentaton box)
\$300 - 350

W68

1 bottle Cuvee Dom Perignon Vintage 1978
\$300 - 350

W69

1 bottle Dom Perignon Vintage 1998 (in sealed presentation box)
\$190 - 230

W70

1 bottle Dom Perignon Vintage 1998 (in presentation box)
\$190 - 230

W71

1 bottle Dom Perignon Vintage 1998 (in sealed presentation box)
\$190 - 230

W72

1 bottle Dom Perignon Vintage 2002 (in presentation box - A tribute to Andy Warhol)



W73

1 bottle Dom Perignon Vintage 2002 (in presentation box)

W74

1 bottle Dom Perignon Rose 2004 Special Bjork & Chris Cunningham Limited Edition (sealed presentation box) \$430 - 480

W75

1 bottle Dom Perignon Vintage 2004 - A Limited Edition by Jeff Koons (in presentation box)

W76

1 bottle Dom Perignon Vintage 2004 (sealed presentation box) \$200 - 250

W77

1 bottle Dom Perignon Vintage 2004 (sealed presentation box) \$200 - 250

W78

1 bottle Dom Perignon Vintage 2006 Special Bjork & Chris Cunningham Limited Edition bottling (sealed presentation box) \$230 - 280

W79

1 bottle Dom Perignon Vintage 2006 Special Bjork & Chris Cunningham Limited Edition bottling (sealed presentation box) \$230 - 280

W80

1 bottle Dom Perignon Vintage 2009 Very Special Tokujin Yoshioka Limited Edition bottling (sealed presentation box) \$220 - 250

W81

1 bottle Piper Heidsieck "Rare" Millesime 2002, 1st release, gold filigree on bottle (sealed presentation box) \$250 - 280

W82

1 bottle Piper Heidsieck "Rare" Millesime 2002, 2nd release, gold filigree on bottle (sealed presentation box) \$250 - 280

W83

1 bottle (sealed presentation box) Salon "Les Mesnil" Brut Blanc de Blancs Vintage 2002 (J Robinson 20/20, Parker 100) \$530 - 580

W84

1 bottle Taittinger Comtes de Champagne Blanc de Blancs Vintage 2004 (wooden presentation box) \$260 - 290

W85

1 bottle Dom Ruinart Blanc de Blancs 2004 (sealed presentation box) \$220 - 260

W86

1 half bottle Veuve Cliquot Ponsardin NV (showing age)

W87

1 bottle Champagne Maxim's "Cuvee Annees Folles" Blanc de Noirs 100% Pinot Noir from cellars Maxim's Hotel, Paris

W88

1 bottle Champagne Maxim's "Cuvee Blanc de Blancs" 100% chardonnay from cellars Maxim's Hotel, Paris

W89

1 magnum Moet & Chandon Brut Imperial NV (1500ml)

W90

1 magnum Bruno Paillard Premiere Cuvee NV (1500ml)

W91

1 magnum Boizel Brut Reserve NV (1500ml) in wooden presentation box

FRENCH SPARKLING

W92

2 bottles Eric Bordelet Chateau de Hauteville "Sidre" Brut NV

W93

2 bottles Eric Bordelet Chateau de Hauteville "Sidre" Brut NV

W94

3 bottles Louis Perrier Brut Excellence N/V

W95

3 bottles Louis Perrier Brut Excellence N/V

W96

3 bottles Louis Perrier Brut Excellence N/V

ITALIAN

W97

2 bottles Le Marchesine Franciacorta Saten Millesimato 2010

W98

2 bottles Villa Antinori Chianti Classico Riserva 1981 (low neck, labels showing age)

W99

1 bottle Marchese Antinori Chianti Classico Riserva 2009

W100

1 bottle Terreliaide (Utti) Majuri Nero D'Avola Syrah 2012

AUSTRIAN

W101

2 bottles Weingut Brundlmayer "Lamm" Gruner Veltliner Reserve 2015, the icon of Austrian Gruner Veltliner

W102

2 bottles Weingut Brundlmayer Ried Zobinger "Heiligenstein" Lyra Kamptal Reserve Riesling 2015



W89



W62



W64



W65

W103

2 bottles Weingut Brundlmayer Ried Zobinger "Heiligenstein" Lyra Kamptal Reserve Riesling 2015

SPANISH

W104

2 bottles Artadi Pagos Viejos Rioja 2004 (low neck, staining to one label)

W105

1 bottle Muga Rioja Seleccion Especial 2005 (low neck)

GERMAN

W106

2 bottles, 1 x Pieroth 2001 Neu-Bamberger Kletterberg Ortega Beerenauslese Rheinhessen, 1 x Pieroth 2005 Wollsteiner Rheingrafenstein Kerner Beerenauslese Rheinhessen

W107

3 bottles 375ml C. Von Schubert Marimin Grunhauser Auslese 44 Herrenberg Riesling 2005

W108

3 bottles 375ml C. Von Schubert Auslese 21 Marimin Grunhauser Abtsberg Riesling 2005

W109

2 bottles C. Von Schubert Marimin Grunhauser Abtsberg Auslese Riesling 2006

W110

2 bottles C. Von Schubert Marimin Grunhauser Abtsberg Spatlese Riesling 2006

W111

2 bottles 375mls Donnhoff Niederhauser Hermannshohle Riesling Auslese 2006

W111A

1 bottle Graacher Himmelreich Riesling Kabinett Feinherb 2006, Kollektion Kerpen

W112

3 bottles Mosel Saar Ruwer Scharzhof Riesling 2008 (damage to two capsules, levels slightly down)

W113

1 bottle Ansgar Clusserath Trittenheimer Apotheke Riesling Auslese 2013

W114

1 bottle Fritz Haag Brauneberger Juffer Sonnenuhr Riesling Auslese 2014

W115

2 bottles Weingut Wittmann Westhofen "Kirchspiel" Riesling Gold Cap trocken Rheinhessen 2014 (J Robinson 19/20, Parker 96)

W116

2 bottles Weingut Wittmann Westhofen "Aulerde" Riesling Gold Cap trocken Rheinhessen 2014 (J Robinson 18.5/20, Parker 96)

W117

1 bottle Dr Loosen Wehlener Sonnenuhr Very Old Vine (Alte Reben) "GG" Riesling Mosel 2015

W118

2 bottles Willi Schaefer Graacher Domprobst Riesling Spatlese 2016

W119

2 bottles ClemensBusch Marienberg Riesling Spatlese Mosel 2015

W120

1 bottle ClemensBusch Marienberg Riesling Kabinett Mosel 2016

CALIFORNIAN

W121

1 bottle Marilyn Merlot Napa Valley Cab Sav 1999, 7th Vintage No. 3705

W122

1 bottle Marilyn Merlot Napa Valley Merlot 2001 (slight damage to labels, low neck)

W123

1 bottle Norma Jean California Merlot 2003 6th Vintage (slight damage to label)

AUSTRALIAN RED

W124

1 bottle Penfolds Grange Bin 95, 1994 (middle neck, damage to label) \$360 - 400

W125

1 bottle Penfolds Grange Bin 95, 1997 (middle neck, staining to label) \$300 - 350

W126

1 bottle Penfolds Grange Bin 95, 1999, No. 007557 (middle neck, staining to label) \$320 - 350

W127

1 bottle Penfolds Grange Hermitage Bin 95, 1989 (low neck) \$350 - 450

W128

1 bottle Penfolds Grange Hermitage Bin 95, 1989 (low neck) \$350 - 450

W129

1 bottle Penfolds Grange Hermitage Bin 95, 1989 (low neck, slight marks to label) \$350 - 450



W151



W168

W130

1 bottle Penfolds Grange Hermitage Bin 95, 1989 (low neck)
\$350 - 450

W131

1 bottle Penfolds Grange Bin 95, 1996 (middle neck)
\$300 - 400

W132

1 bottle Penfolds Grange Bin 95, 1996 (middle neck)
\$300 - 400

W133

1 bottle Penfolds Grange Bin 95, 1996 (middle neck)
\$300 - 400

W134

1 bottle Penfolds Grange Bin 95, 1996 (high neck)
\$300 - 400

W135

1 bottle Penfolds Grange Bin 95, 1996 (high neck)
\$300 - 400

W136

1 bottle Penfolds Grange Bin 95, 1996 (middle neck)
\$300 - 400

W137

1 bottle Penfolds Coonawarra Bin 128, 1996 (low neck, label very badly damaged)

W138

3 bottles Penfolds Bin 389 Cab Shiraz, 2001

W139

2 bottles Penfolds Bin 389 Cab Shiraz, 2002 (high to middle neck, minor staining to labels)

W140

2 bottles Penfolds Bin 389 Cab Shiraz 2009 (minor damage to labels)

W141

1 bottle Penfolds Bin 407 Cab Sav 2002 (very minor damage to labels)

W142

1 bottle Penfolds Bin 707 Cab Sav 2004, Bottle No. 47199 (middle neck, slight damage to back label)
\$180 - \$250

W143

1 bottle Penfolds Bin 707 Cab Sav 2005, Bottle No. 15105 (middle neck, slight damage to back label)
\$180 - \$250

W144

1 bottle Penfolds Bin 707 Cab Sav 2005, Bottle No. 15119 (middle neck, very minor damage to back label)
\$180 - 250

W145

1 bottle Penfolds Bin 707 Cab Sav 2005, Bottle No. 15113 (middle neck, minor damage to back label)
\$180 - 250

W146

2 bottles Penfolds Cellar Reserve Cab Sav Shiraz 2005 (minor damage to some labels)

W147

1 bottle Penfolds RWT Shiraz Barossa Valley 2006, Bottle No. 10585 (very minor damage to back label)

W148

1 bottle Penfolds RWT Shiraz Barossa Valley 2007, Bottle No. 05645 (very minor marks to label)

W149

1 bottle Penfolds Cab Sav Bin 707 1997, Bottle No. 010802 (middle neck, very minor marks to labels)
\$220 - 280

W150

1 bottle Penfolds Cab Sav Bin 707 1996, Bottle No. 04304 (high neck, some staining and damage to back label)
\$240 - 300

W151

6 bottles Penfolds Bin 28 Kalimna Shiraz 2009

W152

6 bottles Penfolds Bin 28 Kalimna Shiraz 2009

W153

6 bottles Penfolds Bin 28 Kalimna Shiraz 2009

W154

6 bottles Penfolds Bin 28 Kalimna Shiraz 2009

W155

6 bottles Penfolds Bin 28 Kalimna Shiraz 2009

W156

6 bottles Penfolds Bin 28 Kalimna Shiraz 2009

W157

6 bottles Penfolds Bin 28 Kalimna Shiraz 2009

W158

6 bottles Penfolds Bin 28 Kalimna Shiraz 2009

W159

6 bottles Penfolds Bin 28 Kalimna Shiraz 2009

W160

6 bottles Penfolds Bin 28 Kalimna Shiraz 2009

W161

6 bottles Penfolds Bin 28 Kalimna Shiraz 2009

W162

6 bottles Penfolds Bin 28 Kalimna Shiraz 2009

W163

6 bottles Penfolds Bin 28 Kalimna Shiraz 2009

W164

6 bottles Penfolds Bin 28 Kalimna Shiraz 2009

W165

6 bottles Penfolds Bin 28 Kalimna Shiraz 2009

W166

6 bottles Penfolds Bin 28 Kalimna Shiraz 2009

W167

6 bottles Penfolds Bin 28 Kalimna Shiraz 2009

W168

6 bottles Penfolds Bin 138 Grenache Shiraz Mourvedre Barossa Valley 2010

W169

6 bottles Penfolds Bin 138 Grenache Shiraz Mourvedre Barossa Valley 2010

W170

6 bottles Penfolds Bin 138 Grenache Shiraz Mourvedre Barossa Valley 2010

W171

6 bottles Penfolds Bin 138 Grenache Shiraz Mourvedre Barossa Valley 2010

W172

6 bottles Penfolds Bin 138 Grenache Shiraz Mourvedre Barossa Valley 2010

W173

6 bottles Penfolds Bin 138 Grenache Shiraz Mourvedre Barossa Valley 2010

W174

6 bottles Penfolds Bin 138 Grenache Shiraz Mourvedre Barossa Valley 2010

W175

6 bottles Penfolds Bin 138 Grenache Shiraz Mourvedre Barossa Valley 2010

W176

6 bottles Penfolds Bin 138 Grenache Shiraz Mourvedre Barossa Valley 2010

W177

6 bottles Penfolds Bin 138 Grenache Shiraz Mourvedre Barossa Valley 2010

W178

6 bottles Penfolds Bin 138 Grenache Shiraz Mourvedre Barossa Valley 2010

W179

1 bottle Henschke Hill of Grace 1976 (low neck)
\$500 - 600

W180

1 bottle Henschke Hill of Grace 1993 (in box)
\$400 - 480

W181

1 bottle Henschke Hill of Grace 1996 (low neck)
\$400 - 480

W182

1 bottle Henschke Keyneton Estate Shiraz Cabernet Merlot 1995 (low neck, damage to labels)

W183

1 bottle Henschke Mount Edelstone 1998 (middle neck, minor marks to label)

W184

2 bottles Henschke Cyril Henschke Cabernet Sauvignon 1999 (middle neck, slight damage to some labels)

W185

2 bottles, 1 x De Bortoli Yarra Valley Cab Sav 1995 (some staining to label), 1 x Lindemans Reserve Cab Merlot 2001 (high neck, some damage to label)

W186

1 bottle Wyndham Estate Show Reserve Cab Merlot 1998 (middle neck, very minor damage to back label)

W187

2 bottles, 1 x Jamiesons Run Reserve Coonawarra 1998 (high shoulder, minor damage to back label), 1 x Yalumba The Reserve 2001 (low neck, very minor marks to label)

W188

1 bottle James Irvine Grand Merlot Eden Valley 1999 (very minor damage to back label)

W189

1 bottle Battle of Bosworth 'Best of Vintage' McLaren Vale Shiraz/Cab Sav /Petit Verdot 2012 (from the very best vintage barrel only - 1 barrel) (extremely limited bottling from exceptional year - not imported into NZ)

W190

1 bottle Battle of Bosworth Old Vine Graciano McLaren Vale 2016

W191

1 bottle Battle of Bosworth Touriga Nacional McLaren Vale 2016 from rare ancient Portuguese variety vines 1st in Australia very limited

W192

1 bottle Wolf Blass Black Label Shiraz Cab Sav Malbec, 30th Vintage 2002

W193

1 bottle Wild Duck Creek Estate Heathcote Shiraz Reserve 2004 (middle neck, very minor damage to back label)

W194

1 bottle Wild Duck Creek Estate Duck Muck Heathcote 2004 (handwritten), (middle neck, very minor damage to back label)

W195

4 bottles Rosemount Hill of Gold Mudgee Shiraz 1999 (middle to low neck, minor damage to one label)

W196

1 bottle Torbreck Barossa Valley The Factor 2003 (minor damage and staining to label, level down)

W197

2 bottles Torbreck Barossa Valley Descendant 2004 (staining to cork, levels down, staining and minor damage to labels)

W198

1 bottle Kaesler 'Very Old Vines' Barossa Valley Shiraz 2013 bottle no. 1495 - from 63 year old vines. Not imported into NZ

W199

3 bottles Lindemans Bin 99 Pinot Noir Bin Series 2011 (minor damage to some back labels)

AUSTRALIAN WHITE**W200**

1 bottle Penfolds Reserve Bin 08A Chardonnay Adelaide Hills 2008

W201

1 bottle Nantua Les Deux Chardonnay 2004 (minor marks to labels)

W202

1 bottle Battle of Bosworth 'White Boar' McLaren Vale Cordon-Cut Shiraz/Cab Sav 2013 (grapes cordon-cut and left to dry out on vine for 2 weeks)

W203

1 bottle Henschke Julius Eden Valley Riesling 2003 (damage to labels)

NEW ZEALAND RED**W204**

2 bottles Te Mata Coleraine Cab/Merlot 1994 (low neck, damage to one label)

W205

1 bottle Te Mata Coleraine Cab/Merlot 1995 (low neck, some damage to label)

W206

1 bottle Te Mata Coleraine Cab/Merlot 1996 (low neck, some damage to label)

W207

1 bottle Te Mata Coleraine Cab/Merlot 1997 (mid neck)

W208

2 bottles Te Mata Coleraine Cab/Merlot 2000 (low to mid neck, some marks to label)

W209

1 bottle Te Mata Coleraine 2006 (low neck)

W210

1 bottle Te Mata Coleraine 2007 (low neck)

W211

1 bottle Te Mata Awatea Cab/Merlot 1994 (low neck)

W212

2 bottles Te Mata Bullnose Syrah 2009 (level down slightly)



W213

2 bottles Craggy Range Le Sol Gimblett Gravels 2002 (levels down, some damage to labels)

W214

1 bottle Craggy Range Le Sol Gimblett Gravels 2004 (level down, damage to label)

W215

2 bottles Craggy Range Le Sol Gimblett Gravels 2006 (levels down)

W216

1 bottle Craggy Range Le Sol Gimblett Gravels 2007

W217

2 bottles Craggy Range Sophia Gimblett Gravels 2008 (high neck)

W218

1 boxed bottle Tom McDonald Cab Sav/ Merlot 1996

W219

1 bottle Church Road Tom Merlot/Cab Sav 2005

W220

1 bottle Te Motu Cab/Merlot 2005 (minor damage to label)

W221

3 bottles Te Motu Cab/Merlot 2005 (damage to one back label)

W222

1 bottle Stonyridge Larose Waiheke Island Cab Sav / Petit Verdot /Malbec /Merlot/ Cab Franc 2010

W223

1 bottle Stonyridge Larose Waiheke Island Cab Sav / Petit Verdot /Malbec /Merlot/ Cab Franc 2010

W224

1 bottle Stonyridge Larose Waiheke Island Cab Sav / Petit Verdot /Malbec /Merlot/ Cab Franc 2011

W225

1 bottle Stonyridge Larose Waiheke Island Cab Sav / Petit Verdot /Malbec /Merlot/ Cab Franc 2011

W226

1 bottle Stonyridge Larose Waiheke Island Cab Sav / Petit Verdot /Malbec /Merlot/ Cab Franc 2012

W227

1 bottle Destiny Bay Destinae 2006

W228

1 bottle Destiny Bay Magna Praemia 2006 \$230 - 280

W229

1 bottle Destiny Bay Magna Praemia 2007 \$230 - 280

W230

1 bottle (boxed) Destiny Bay Magna Praemia 2010 \$180 - 230

W231

3 bottles, 1 x St Nesbit 1985 (staining to label)
1 x Vin Alto Celaio 1998 No. 1566
1 x Brookfields Cab Sav 1991 (label badly stained)
All levels down

W232

1 bottle Bensen Block Hawke's Bay Merlot 2012

W233

1 bottle Unison Selection Hawke's Bay 1999 (high neck)

W234

1 bottle Rochfort Rees Gimblett Gravels Hawke's Bay Syrah 2013 (slight damage to back label)

W235

3 bottles Esk Valley Merlot/ Cab Sav 1991 (high shoulder to high neck)

W236

2 bottles Esk Valley The Terraces Malbec/ Merlot/ Cab Franc 2000

W237

2 bottles Esk Valley Syrah 2006 Reserve

W238

2 bottles Clearview The Basket Press 2009

W238a

1 Jeroboam Clearview Estate Enigma Hawkes Bay 2007 (3000ml)

W239

1 bottle Sacred Hill Helmsman Cav Sav/ Cab Franc/ Merlot 2009

W240

1 bottle Sacred Hill Brokenstone Merlot/ Cab Sav/ Syrah/ Cab Franc 2010

W241

1 Bottle Elephant Hill 'Heironymus' Cab/ Malbec/Merlot 2013 (Bob Campbell 97 points, R. Chan 20/20)

NEW ZEALAND PINOT NOIR

W242

1 bottle Te Kairanga Pinot Noir 1993 (staining to labels)

W243

2 bottles, 1 x Amisfield RKV Reserve Pinot Noir 2010 (slight damage to label)
1 x Rochfort Rees Central Otago Pinot Noir 2012

W244

1 bottle Sovereign 688 Pinot Noir 2011 (damage to label)

W245

2 bottles Gibbston Valley China Terrace Pinot Noir 1 x 2011, 1 x 2013

W246

3 bottles Gibbston Valley China Terrace Pinot Noir 2012

W247

1 bottle Gibbston Valley School House Pinot Noir 2013

W248

3 bottles, Gibbston Valley Central Otago Pinot Noir 2 x 2013, 1 x 2014

W248A

1 magnum (wooden box) Gibbston Valley Reserve Pinot Noir 2006 (1500ml)

W249

2 bottles, 1 x Burn Cottage Central Otago Pinot Noir 2012
1 x Te Whare Ra Marlborough Pinot Noir 2012

W250

1 bottle Ata Rangī Martinborough Pinot Noir 2013

W251

1 bottle Escarpment 'Kupe' Martinborough Pinot Noir 2013

W252

1 bottle Escarpment "Kupe" Martinborough Pinot Noir 2014

NEW ZEALAND WHITE**W253**

2 bottles, 1 x Neudorf Chardonnay Moutere 2007
1 x Escarpment Kupe 2009

W254

2 bottles Martinborough Vineyard Chardonnay 2012

W255

3 bottles Dry River Chardonnay 2014

W256

3 bottles Dry River Chardonnay 2014

W257

2 bottles Dada 1 2008

W258

1 bottle Dry River Pinot Gris 2009

W259

3 bottles Dry River Pinot Gris 2014

W260

3 bottles Dry River Pinot Gris 2014

W261

3 bottles Dry River Pinot Gris 2014

W262

3 bottles Dry River Pinot Gris 2014

W263

2 bottles Dry River Viognier 2011

W264

2 bottles Dry River Viognier 2011

W265

2 bottles Dry River Riesling 2004

W266

3 bottles Dry River Riesling 2005

W267

1 bottle Dry River Riesling 2006

W268

3 bottles Dry River Riesling 2011

W269

3 bottles Dry River Riesling 2015

W270

3 bottles Dry River Riesling 2015

W271

2 bottles, Felton Road Block 1 Riesling 1 x 2003, 1 x 2004

W272

1 bottle Felton Road Central Otago Riesling 2003

W273

2 bottles Felton Road Central Otago Riesling 1 x 2008, 1 x 2009

W274

1 bottle Gibbston Valley Central Otago Riesling 2014

W275

2 bottles Vinoptima Reserve Ormond Gewurztraminer 1 x 2006, 1 x 2008

W276

3 bottles Vinoptima Reserve Ormond Gewurztraminer 2008

W277

2 bottles Rippon Gewurztraminer Lake Wanaka Central Otago 2011

W278

1 bottle Palliser Estate Martinborough Methode Traditionnelle 2008

DESSERT WINES**W279**

1 bottle Gibbston Valley Central Otago Late Harvest 2014 (750ml)

W280

2 bottles NZ Framingham Wines F-Series Marlborough Riesling Trockenbeerenauslese 2013 (375ml)
(Bob Campbell 99 points, R. Chan 20/20)

W281

3 bottles NZ Framingham Wines F-Series Marlborough Riesling Trockenbeerenauslese 2013 (375ml)
(Bob Campbell 99 points, R. Chan 20/20)

W282

2 bottles NZ Framingham Wines F-Series Marlborough Riesling Trockenbeerenauslese 2014 (375ml)
(Bob Campbell 97 points, R. Chan 19.5+ points)

W283

2 bottles NZ Framingham Wines F-Series Marlborough Riesling Trockenbeerenauslese 2014 (375ml)
(Bob Campbell 97 points, R. Chan 19.5+ points)

W284

2 bottles NZ Framingham Wines F-Series Marlborough Riesling Trockenbeerenauslese 2014 (375ml)
(Bob Campbell 97 points, R. Chan 19.5+ points)

W285

2 bottles Framingham Wines F-Series Marlborough Riesling Trockenbeerenauslese 2015
1 x bottle No. 415/533 (375ml)
1 x bottle No. 416/533 (375ml)

W286

2 bottles Framingham Wines F-Series Marlborough Riesling Trockenbeerenauslese 2015
1 x bottle No. 419/533 (375ml)
1 x bottle No. 199/533 (375ml)

W287

1 bottle Tupari Late Harvest Riesling Awatere Valley 2014 (375ml)

W288

3 bottles Campbells Merchant Prince Rare Netherglen Muscat N/V (375ml) (Australian)

PORT**W289**

1 bottle Quinta Do Noval 1963 Vintage Port (low neck, label badly damaged)
\$250 - 300

W290

1 bottle Quinta Do Noval (assume) 1963 Vintage Port (low neck, label very badly damaged)
\$250 - 300

W291

1 bottle Taylor Fladgate & Yeatman Vintage Port 1970 (level well down, label badly damaged)

W292

1 bottle Taylor Fladgate & Yeatman Vintage Port (assume) 1970 (low neck, label badly damaged and illegible)

W293

1 bottle Taylor Fladgate & Yeatman Vintage Port (assume) 1970 (high shoulder, label badly damaged and illegible)

W294

1 bottle Dow's 1980 Vintage Port 375ml (mid neck)

W295

1 bottle in wooden box Fonseca Porto Guimaraens Vintage Port 1986



W296

W296

3 bottles (Special Wooden Case ex direct from Taylors) Taylors 'Vargellas' Vinha Velha Vintage Port 2007 ex winery stocks - only released in 3 bottle wooden boxes. Rated 'the wine of the vintage' (2007 exceptionally good vintage) \$800 - 900

SPIRITS AND LIQUEURS

W297

1 bottle The Old Blend Scotch Whisky of the White Horse Cellar from the original recipe, 1746 EN No. 1242681 \$450 - 600

W298

1 bottle The Scotch Malt Whisky Society The Vaults, Leith, Scotland . Distilled Sep '79, Bottled Mar '91 Proof Strength 113.5 deg 64.9%, 750ml, Society Cask No. 13.5 \$400 - 500

W299

5 bottles
 1 x 50ml St Remy VSOP 'Authentic' French Brandy 37% NV
 1 x 50ml Calem Old Vine Fine White Porto (Port) 19.5% NV
 1 x 50 ml Bombay Sapphire London Dry Gin 40% NV
 2 x 50ml Gordons London Dry Gin 35.5% NV

W300

1 bottle Chamart 'VSOP' French Brandy 1000ml 37.5% long aged in oak barrels

W301

1 bottle The Hennessy XO Extra Old Cognac, boxed, 700ml, 40%

W302

1 bottle The Hennessy XO Extra Old Cognac, boxed, 700ml, 40%



W303

W303

1 bottle The Hennessy XO Extra Old Cognac, boxed, 700ml, 40%

W304

Box of Tesseron Cognacs the 'XO' Vintage Dated Collection each containing:
 1 bottle Lot No 29 (1929) XO Exception distilled 1920 incl 5% from 1905 & 30% from 1906 - stocks now exhausted. (Parker score 100 points)
 1 bottle Lot No 53 (1953) XO Perfection distilled from 50 year old stocks - generally reserved for family. (Parker score 98 points)
 1 bottle Lot No 76 (1976) XO Tradition distilled 1976 from 25-30 year old reserve stocks from Grande Champagne. (Parker score 96 points)
 1 bottle Lot no 90 (1990) XO Selection/Ovation distilled throughout 1990's from three specific terroirs in Grande Champagne. (Parker score 95 points)

W305

Box of Tesseron Cognacs the 'XO' Vintage Dated Collection each containing:
 1 bottle Lot No 29 (1929) XO Exception distilled 1920 incl 5% from 1905 & 30% from 1906 - stocks now exhausted. (Parker score 100 points)
 1 bottle Lot No 53 (1953) XO Perfection distilled from 50 year old stocks - generally reserved for family. (Parker score 98 points)
 1 bottle Lot No 76 (1976) XO Tradition distilled 1976 from 25-30 year old reserve stocks from Grande Champagne. (Parker score 96 points)
 1 bottle Lot no 90 (1990) XO Selection/Ovation distilled throughout 1990's from three specific terroirs in Grande Champagne. (Parker score 95 points)

W306

1 bottle (in canister) De Bortoli 'Show Liqueur' Muscat NV oak barrel aged 8 years Multiple Trophy Award winner



W297

W307

1 bottle (boxed) Armagnac Delord Recolte 1982, 700ml, 40%

W308

1 presentation box bottle Kweichow Moutai 30, 500ml, 53% \$1,500 - 2,000

W309

1 bottle Zenkuro 'Nigori' Sake NV Silver Medal London Sake Challenge 2016 (375ml)

W310

1 bottle Zenkuro 'Wakatipu NZ' Junmaishu Sake NV (375ml)



W298




GRAND VIN
DE
LAFITE
ROTHSCHILD

12 Billes

20

Conditions of Sale

1.

The highest Bidder is deemed to be the Buyer, and if during the Auction the Auctioneer considers that a dispute has arisen, the Lot in dispute shall be immediately put up again for sale.

2.

The Auctioneer has the right to refuse any bid and to advance the bidding at his absolute discretion.

3.

The Seller shall be entitled to place a reserve on any Lot and the Auctioneer shall have the right to bid on behalf of the Seller for any Lot on which a reserve has been placed.

Dunbar Sloane Ltd have the right to withdraw or divide any Lot or to combine any two or more Lots at their sole discretion.

4.

The Buyer shall forthwith upon the purchase give in his/her name and permanent address.

The Buyer may be required to pay down forthwith the whole or any part of the Purchase Money, and if he/she fails to do so, the Lot may at the Auctioneer's absolute discretion be put up again and resold.

The Buyer shall pay to Dunbar Sloane Ltd a premium of 17% on the hammer price together with GST at the standard rate on the premium, and agrees that Dunbar Sloane, when acting as agent for the Seller, may also receive commission from the Seller.

5.

Each Lot sold by the Seller thereof with all faults and defects therein and with all errors of description and is to be

taken and paid for whether genuine and authentic or not and no compensation shall be paid for the same.

Dunbar Sloane Ltd act as agents only and neither they nor the Seller are responsible for any faults or defects in any Lot or the correctness of any statement as to the authorship, origin, date, age, attribution, genuineness, provenance or condition of any Lot.

All statements in the Catalogues, Advertisements or Brochures of forthcoming sales as to any of the matters specified in (b) above are statements of opinion, and are not to be relied upon as statements of representations of fact, and intending purchasers must satisfy themselves by inspection or otherwise as to all of the matters specified in (b) above, as to the physical description of any Lot, and as to whether or not any Lot has been repaired.

The Seller and Dunbar Sloane Ltd do not make or give, nor has any person in the employment of Dunbar Sloane Ltd any authority to make or give, any representation or warranty.

In any event neither the Seller nor Dunbar Sloane Ltd are responsible for any representation or warranty, or for any statement in the Catalogues, Advertisements or Brochures of forthcoming sales.

6.

Notwithstanding any other terms of these conditions, if within 7 days after the sale Dunbar Sloane Ltd have received from the Buyer of any Lot notice in writing that in his view the Lot is deliberate forgery and within 9 days after such notification, the Buyer returns the same to Dunbar Sloane Ltd in the same condition as at the time of sale and satisfies Dunbar Sloane Ltd had considered in the light of the entry in the Catalogue the Lot is a

deliberate forgery then the sale of the Lot will be rescinded and the purchase price of the same refunded.

7.

To prevent inaccuracy in delivery, and inconvenience in settlement of Purchase, no Lot can be taken away during the times of sale, nor can any Lot be taken away unless it has been paid for in full.

All lots are to be paid for and taken away at the Buyer's expense within two working days from the sale. Purchases, whilst in our care, will be insured for this period (subject to terms and conditions).

8.

On failure of a Buyer to take away and pay for any Lot in accordance with Condition 7, Dunbar Sloane Ltd reserves any other right or remedies.

To resell the Lot or cause it to be resold by public sale, any money paid in part payment being forfeited, any deficiency attending such resale after deducting all costs incurred in connection with the Lot to be made good by the defaulting Buyer, and any surplus to be the Seller's or: To store the Lot or cause it to be stored whether at their own premises or elsewhere at the sole expense of the Buyer, and to release the Lot only after payment in full of the purchase price together with interest there on of 5% above Bank minimum lending rate, the accrued cost of removal, storage and insurance (if any) and all other costs



NZ & International Fine Arts

8 & 9 August 2018

Enquiries

Helena Walker

+64 4 472 1367

art@dunbarsloane.co.nz

Dunbar M Sloane

+64 9 377 5820

dunbar.akl@xtra.co.nz



Studio Ceramics & Applied Art

9 August 2018

Enquiries

Bettina Frith or

Helena Walker

+64 4 472 1367

art@dunbarsloane.co.nz

Buyers Guide

If you have not bought from Dunbar Sloane before, please read the following notes. They are set out in the order you are likely to come across them in the process of buying at auction. Staff will be pleased to answer any questions you may have.

Before the auction

The terms and conditions under which the buyer acts at a sale are detailed at the back of this catalogue. We recommend that you read and understand these conditions of business before registering to bid at an auction. This sale is subject to the conditions of business printed in this catalogue and to the reserves.

Viewing

All lots are available for inspection prior to the sale. Although staff will endeavour to answer your enquiries, and give advice, the final decision to bid, is at your discretion and liability.

Pre-Sale Estimates

The estimated prices printed below the catalogue descriptions are in New Zealand dollars and are the approximate prices expected to be realised, excluding buyers premium. They are not definitive, they are prepared well in advance of the sale and they are subject to revision.

Condition reports

Dunbar Sloane Ltd will provide a verbal condition report if you would like an opinion on any particular lot prior to purchasing. All goods are sold "as is" and it is up to the buyer to satisfy themselves as to the condition of an item before the auction.

The auction

REGISTRATION

To bid at the auction you will need to register for a bidding number at the front desk either during the viewing or prior to the auction.

BUYING AT THE AUCTION

Please bid clearly and promptly using your bidding number. When you successfully purchase a lot the auctioneer will ask you for your number, and this will show on your invoice.

APPROXIMATE SELLING RATE

Auctions are generally conducted at the rate of about 100 lots per hour. However, this can vary.

ABSENTEE BIDDING

If you are unable to attend the auction, Dunbar Sloane Ltd can bid on your behalf according to your written instructions. This is a free service for intended buyers. Please complete clearly the form at the back of this catalogue and submit it to Dunbar Sloane Ltd at least 24 hours before the sale to ensure it is safely received. Lots will be purchased for you as reasonably as possible, subject to other bids in the room and to reserves.

Telephone Bidding

If you are unable to attend the auction, you can elect to bid by telephone (subject to availability). Telephone bidding must be arranged with Dunbar Sloane Ltd prior to the sale and is subject to a minimum lot estimate of \$1,000 or greater. Please note that the auctioneer determines the increments in bidding, not the telephone bidder. We accept no responsibility if for whatever reason we are unable to contact you and as such recommend leaving a covering bid.

Buyers Premium

The buyer shall pay to Dunbar Sloane Ltd a premium of 17% of the hammer price plus GST on the premium only—effectively adding 19.55% to the hammer price.

After the auction

PAYMENT

Payment for purchase is due in New Zealand dollars within 48 hours from the date of sale by cash, cheque or eftpos. Alternatively payment can be made by telegraphic transfer direct to our bank: (Please add \$25NZ to cover New Zealand bank charges)

ANZ

06 0501 0524945 00

Swift Code ANZBNZ22

Dunbar Sloane Ltd

Please include details of sale date and lot numbers with all payments.

Collection of Purchases

Property purchased can be collected as soon as full payment has been received. Any items not collected within seven days of the auction may be subject to a storage and fee. Insurance (subject to terms and conditions) applies for up to two working days from the date of the sale whilst items are in our care.

Purchases are insured for a period of 48 hours after the auction day.

Items must be paid for straight away and a second account for courier/freight charges will follow approximately 6 days later when we have had time to confirm courier charges.

Packaging and Transportation

We advise buyers to arrange transport and insurance with their preferred provider/s. We accept no responsibility for loss or damage in transit. For smaller items able to be couriered, Dunbar Sloane Ltd can pack and courier for a fee. This is to be paid before the goods leave our premises. We pack with care, however we take no responsibility for damage once your goods leave our premises. It is up to the buyer to arrange insurance to cover any damage or loss in transit.

PERMISSION OF THE RIGHT WORSHIPFUL THE M



ENTRIES CURRENTLY INVITED

Antiquarian Books & Maps

29 August 2018

Enquiries

Anthony Gallagher

+64 4 472 1367

antiques@dunbarsloane.co.nz



ENTRIES CURRENTLY INVITED

Pacific & Maori Artefacts

30 August 2018

Enquiries

Jeff Hobbs

027 566 8822

sulutribal@gmail.com

Catalogue Subscription

7 Maginnity Street, Wellington
PO Box 224, Wellington 6140, New Zealand
P
+64 4 472 1367
F
+64 475 7389

		Tick	NZ Cost	Europe/USA	Australia/Pacific
Antique & Artefacts	Minimum of 3 catalogues per year		\$70.00	\$130.00NZ	\$100.00NZ
Fine & Applied Art	Minimum of 3 catalogues per year		\$70.00	\$130.00NZ	\$100.00NZ
Affordable Art	Minimum of 2 catalogues per year		\$30.00	\$50.00NZ	\$45.00NZ
Toys & Dolls	Minimum of 1 catalogues per year		\$15.00	\$30.00NZ	\$25.00NZ
Tribal & Maori Artefacts	Minimum of 1 catalogues per year		\$25.00	\$50.00NZ	\$30.00NZ
Rare Books, Maps	Minimum of 2 catalogues per year		\$30.00	\$50.00NZ	\$45.00NZ

All costs are noted in New Zealand dollars. Postage within New Zealand included, overseas subscribers please add costs as noted.

Contact details

Full name

Address

City

Country

Phone

Email

Payment

I enclose my cheque payable to Dunbar Sloane Ltd for the above catalogues, alternatively please charge my credit card.

Cheque (enclosed)

Credit card: VISA AMEX Mastercard (Please tick one)

Cardholder Name

Card Number

Expiry Date

Cardholder Signature

ENTRIES CURRENTLY INVITED

Militaria

30 August 2018

Enquiries

Bettina Frith

+64 4 472 1367

info@dunbarsloane.co.nz



ENTRIES CURRENTLY INVITED

Stamps & Coins

29 August 2018

Enquiries

Bettina Frith

+64 4 472 1367

info@dunbarsloane.co.nz





ENTRIES CURRENTLY INVITED

Antique & Decorative Arts

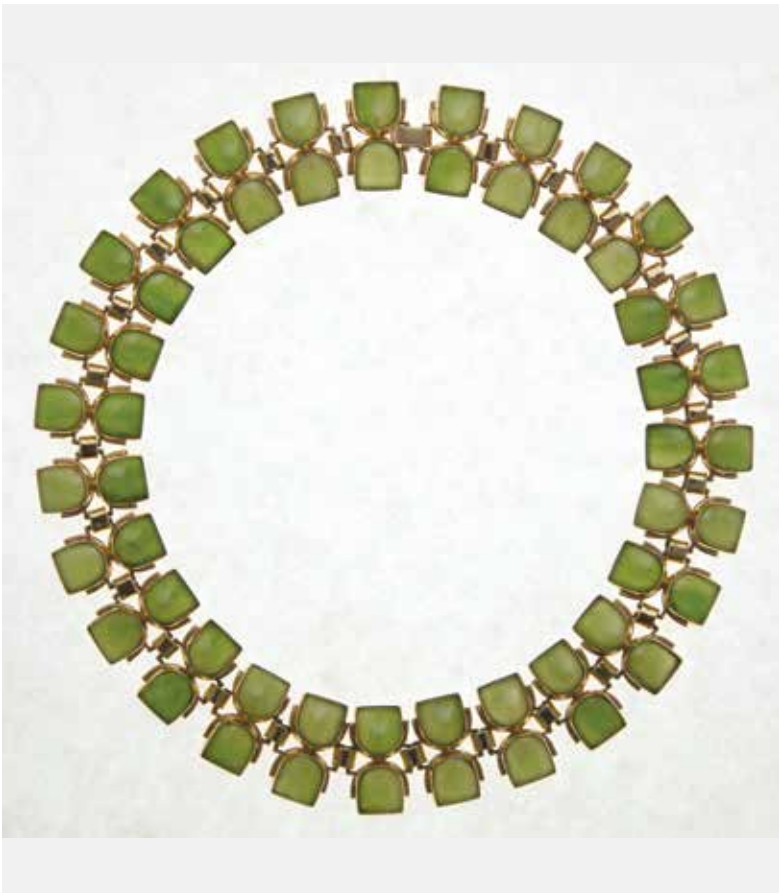
October 2018

Enquiries

Anthony Gallagher

+64 4 472 1367

antique@dunbarsloane.co.nz



ENTRIES CURRENTLY INVITED

Estate Jewellery

October 2018

Enquiries

Bettina Frith

+64 4 472 1367

info@dunbarsloane.co.nz

Absentee Bidding Form

7 Maginnity Street, Wellington
PO Box 224, Wellington 6140, New Zealand
P +64 4 472 1367
F +64 475 7389
E info@dunbarsloane.co.nz

Type of Auction _____

Auction Date _____

Please bid on my behalf at the above sale for the following lots. These bids are to be executed as low as permitted by other bids or reserves. I agree to comply with the Conditions of Sale as printed in the Catalogue.

Full name _____

Address _____

Phone _____

Email _____

SIGNED _____

DATE _____

Lot Number	Title / Description (use block letters)	Maximum Bid Price (excluding premium)

Overseas bidders must complete this section

Please also provide photographic proof of id – passport or drivers licence together with proof of address – utility bill, bank or credit card statement etc. Failure to provide this may result in your bids not being processed. For higher value lots you may also be asked to provide a bank reference. Please provide your credit card details. Alternative methods of payment can be arranged if successful, however we still require this information. NOTE Individual bids registered by overseas bidders must be over \$500 in individual value.

Cardholder Name _____

Card Number _____

Expiry Date _____

VISA AMEX Mastercard (Please tick one)

Cardholder Signature _____

Please double check your bids and read terms below

Please submit your bid as early as possible. In the event of identical bids, the earliest will take precedence. 'Buy' bids are not accepted. The limit you leave should be the amount to which you would bid if you were to attend the Sale. Alternative bids can be placed by using the word 'OR' between Lot Numbers. Buyers are reminded that there is a 17% buyer's premium on the hammer price plus GST on the premium. See conditions of sale.