

# Day 2

## SILVER COLLECTABLES ORIENTAL

Tuesday 30th November 5.30pm start.

### VIEWING

Wednesday	24th November	10am-5pm
Thursday	25th November	10am-5pm
Friday	26th November	10am-5pm
Sunday	28th November	10am-3pm
Monday	29th November	9am-4pm
Tuesday	30th November	9am-4pm

**Note:**

Pre-sale estimates are intended as a general guide only and are prepared well in advance of the sale. All lots, depending on the degree of competition, can realise prices above or below the given estimates.

**Buyers are reminded:**

There is a 15% buyer's premium, plus G.S.T. on this premium

**SILVER**

- 230**  
**Four Piece Sterling Silver Tea Service Set**, comprising teapot, waterpot, milk jug and sugar bowl. Maker Williams (Birmingham) Ltd, Birmingham 1910.  
\$1400-2400 (4)
- 231**  
**Sterling Silver Coffee Pot**. Maker Jas. Deakin & Sons, Sheffield 1896.  
\$400-1000
- 232**  
**Silver Plated Spirit Kettle & Stand**.  
\$200-600
- 233**  
**Sterling Silver Toast Rack**. Maker Deakin & Francis, Birmingham 1923.  
\$100-200
- 234**  
**Two Sterling Silver Greenstone Teaspoons**.  
\$30-50 (2)
- 235**  
**Victorian Sterling Silver Chatelaine**, ornately decorated with cherubs, leaves, flowers and scrolls. Suspended on seven chains: scissor case with scissors, London 1873; Continental silver candle snuffer; Victorian silver plated retractable button hook 1875; silver bucket thimble holder, 1874 with silver thimble, Birmingham 1886; silver plated propelling pencil; silver shell-shaped pin cushion, London 1873; and small turning fork.  
\$1500-2000
- 236**  
**Solid Silver & Glass Perfume Bottle**. Inscribed with initials "AEH". Possibly made in Europe, may be French.  
\$50-100
- 237**  
**Two Sterling Silver Compacts**. One oval shaped, Chester 1897; the other rectangle-shaped, Chester 1896.  
\$50-100 (2)
- 238**  
**Continental Sterling Silver Tea Caddy Spoon**.  
\$50-100
- 239**  
**Small Sterling Silver Snuff/Pill Box**, Oval Shape.  
\$30-50
- 240**  
**Two Silver Plate Fruit Spoons** with berry pattern.  
\$20-40 (2)
- 241**  
**Small Sterling Silver Whistle**.  
\$30-50
- 242**  
**Small Sterling Silver Pepperette**.  
\$30-50
- 243**  
**Four Piece Silver Plate Tea Service Set**, comprising teapot, waterpot, milk jug and sugar bowl. A/f.  
\$40-80 (4)
- 244**  
**Sterling Silver Tray**, inscribed "16th January 1901", maker Walker & Hall, Sheffield 1900.  
\$100-300
- 245**  
**Georgian Silver Vase-Shaped Caster** with square base, engraved "IME", London 1798, H. 17.5cm. Weight 152g.  
\$100-200
- 246**  
**Sterling Silver Chalice Cup** engraved "OUAC (Oxford University Athletic Club) Freshmans Sports 1899, W.A. Butler", London 1898, H. 20cm. Weight 241g.  
\$100-200
- 247**  
**Georgian Sterling Silver Mustard Pot, Hinged Lid**, gilded interior, in the shape of a silver casket, engraved "H", London 1805, Solomon Hougham?/Samuel Hennell?. H. 6.5cm. Weight 164g.  
\$200-300
- 248**  
**Pair of Sterling Silver Sugar Tongs**, engraved "RC", King's Pattern, Birmingham 1829, Edward Thomason. Weight 65g.  
\$50-100
- 249**  
**Pair of Sterling Silver Sugar Tongs**, hallmarked with Regency Head, maker SC EW. Weight 35g.  
\$50-100
- 250**  
**Two Victorian Sterling Silver Pie Spoons**, Old English pattern, d. 1845 and 1857, engraved initials. Weight 270g.  
\$100-150 (2)
- 251**  
**Six Georgian Sterling Silver Tablespoons** in fiddle pattern, engraved "RC", dated 1818 and 1838. Weight 456g.  
\$150-300 (6)
- 252**  
**Eight Sterling Silver Dessert Spoons** in fiddle pattern, London 1806 (two) and 1847 (six). Weight 378g.  
\$100-200 (8)
- 253**  
**Six Victorian Sterling Silver Table Forks**, Old English pattern, London 1847. Weight 445g.  
\$100-200 (6)
- 254**  
**Six Victorian Sterling Silver Dessert Forks**, London 1847. Weight 317g.  
\$100-200 (6)
- 255**  
**Two Victorian Sterling Silver Sauce Ladles** in fiddle pattern with oval bowls, London 1846. Weight 149g.  
\$75-150 (2)
- 256**  
**Two Georgian Sterling Silver Dessert Spoons**, Old English pattern, engraved "IME", London 1794.  
\$50-100 (2)
- 257**  
**Two Georgian Sterling Silver Dessert Spoons**, Old English pattern, engraved "IMC", London 1804, Peter & Anne Bateman. Weight 51g.  
\$50-100 (2)
- 258**  
**Three Georgian Sterling Silver Salt Ladles**, all engraved, London 1781, 1799 and 1838. Weight 48g.  
\$50-100 (3)
- 259**  
**Three Georgian Sterling Silver Salt Spoons**, fiddle pattern, engraved "RC", London 1838.  
\$50-100 (3)
- 260**  
**Four Georgian Sterling Silver Teaspoons**, engraved "TMC", London 1820. Weight 61g.  
\$50-100 (4)
- 261**  
**Two Georgian Sterling Silver Teaspoons**, Old English pattern, London 1805 and 1815. Weight 31g.  
\$40-60 (2)



237 (2)



239



237 (2)



236



242



235



240 (2)



238



241



273



274



275 reverse



275



276



277



265



266



267



268



269



270



271



272 reverse



272

- 262**  
**Pair Silver Plate & Ivory Handled Fish Servers** engraved "Seaford College Athletic Sports 1894".  
 \$40-60 (2)
- 263**  
**Glass Perfume Bottle with Silver Lid,** marked Sterling Silver.  
 \$40-60
- 264**  
**Decorative Metal Table Swan & a Pair of EPNS Grape Scissors.**  
 \$20-40 (2)
- The following 13 lots were given to the grandmother of our vendor, Alice (May) Tubbs, wife of Percy Burnell Tubbs Friba. He was a London architect in the late 19th-early 20th C. He was known as "PBT" and she was known as "AMT".
- 265**  
**Sterling Silver Porringer by Omar Ramsden,** Arts and Crafts Period, spot hammered and dated London 1907. A Christening gift to the vendor, and engraved "Jennifer Mary Tubbs" "April 6th from Allunt". Used extensively by the vendor until the beginning of WWII when she was evacuated to the USA where she remained during the war, returning to England in 1945. Dia. 16cm. Weight 217g.  
 \$3800-4500
- 266**  
**Arts & Crafts-style Sterling Silver Dessert Spoon by Omar Ramsden,** spot hammered, d. 1903, engraved "A.T." Weight 59g.  
 \$500-600
- 267**  
**Arts & Crafts-style Sterling Silver Dessert Spoon by Omar Ramsden,** spot hammered, engraved "A.T." Weight 61g.  
 \$500-600
- 268**  
**Arts & Crafts-style Sterling Silver Dessert Spoon by Omar Ramsden,** spot hammered, d. 1903, engraved "A.T." Weight 63g.  
 \$500-600
- 269**  
**Arts & Crafts-style Sterling Silver Dessert Spoon by Omar Ramsden,** spot hammered, d. 1905, engraved "A.T." Weight 68g.  
 \$500-600
- 270**  
**Arts & Crafts-style Sterling Silver Dessert Spoon by Omar Ramsden,** spot hammered, d. 1905, engraved "A.T." Weight 65g.  
 \$500-600
- 271**  
**Arts & Crafts-style Sterling Silver Dessert Spoon by Omar Ramsden,** spot hammered, d. 1905, engraved "A.T." Weight 64g.  
 \$500-600
- 272**  
**Arts & Crafts-style Sterling Silver Dessert Spoon by Omar Ramsden,** spot hammered, d. 1905, engraved "A.T." Weight 67g.  
 \$500-600
- 273**  
**Arts & Crafts-style Sterling Silver Dessert Fork by Omar Ramsden** d. 1905, engraved "A.T." Weight 49g.  
 \$400-500
- 274**  
**Arts & Crafts-style Sterling Silver Dessert Fork by Omar Ramsden** d. 1914, engraved "A.T." Weight 50g.  
 \$400-500
- 275**  
**Arts & Crafts-style Sterling Silver Dessert Fork by Omar Ramsden** d. 1914, engraved "A.T." Weight 50g.  
 \$400-500
- 276**  
**Arts & Crafts-style Sterling Silver Dessert Fork by Omar Ramsden** d. 1914, engraved "A.T." Weight 49g.  
 \$400-500
- 277**  
**Arts & Crafts-style Sterling Silver Dessert Fork by Omar Ramsden** d. 1914, engraved "A.T." Weight 49g.  
 \$400-500
- 278**  
**Two Sterling Silver Napkin Rings.** Both engraved, one engine turned decoration, Birmingham 1957, the other .925 sterling.  
 \$40-60 (2)
- 279**  
**Sterling Silver & Ivory Letter Opener.** Birmingham 1910, maker C & N.  
 \$40-60
- 280**  
**A Pair of Russian Silver Gilt and Champeve Vodka Cups.** Cyrillic maker's marks possibly DH/DN (Dmitriy Nikolaev c. 1900), 84 standard. H. 4.5cm.  
 \$250-400 (2)
- 281**  
**Seven Silver Plate Coasters,** pie crust rims. Dia. 31cm.  
 \$50-100 (7)
- 282**  
**Silver Plate Art Nouveau Chain Mail Link Ladies Purse,** elongated with floral decoration, snap clasp and carry chain.  
 \$30-50
- 283**  
**Sterling Silver Georgian Sugar Tongs,** maker Peter & William Bateman, London 1811. Together with sterling silver teaspoon, rats tail, Birmingham c.1910.  
 \$50-100 (2)
- 284**  
**Pair of Sterling Silver Vases,** one damaged and weight inside the base loose. Made in Birmingham early 20th C, makers W.B. & L.D. H. 19cm.  
 \$150-300 (2)
- 285**  
**Sterling Silver Condiment, Mustard, Salt & Pepper Set.** Includes two spoons and one plastic liner and one glass liner. London maker S.D. Ltd, early 20th C. Total 7 pieces.  
 \$250-400 (7)
- 286**  
**One Sterling Silver Embossed Match Box Holder,** maker S.B., Birmingham early 20th C.  
 \$50-100
- 287**  
**Sterling Silver Hip Flask,** London maker C.D., early 20th C. Lid needs re-hinging. A/f.  
 \$50-150
- 288**  
**Sterling Silver Sauce Boat** with lion paw feet. Birmingham, maker J & C, early 20th C.  
 \$150-300
- 289**  
**Sterling Silver Rose Bowl** with metal flower holder. Sheffield maker FBS Ltd, early 20th C. H. 9.5cm, D. 15cm.  
 \$150-300



## COLLECTABLES

- 290**  
**William Moorcroft Ovoid Vase**, decorated with pansies in shades of mauve, blue and green on blue ground. Painted green signature. H. 15.5cm.  
 \$150-150
- 291**  
**Walter Moorcroft Baluster Vase**, decorated with clematis in shades of mauve, blue and green on blue ground. Painted blue initials W.M.  
 H. 18cm.  
 \$150-250
- 292**  
**William Moorcroft Baluster Vase**, decorated with pomegranates in shades of mauve and ochre on blue ground. Painted green initials W.M. H. 16cm.  
 \$150-250
- 293**  
**William John Moorcroft Vase**, shouldered and cylindrical. Decorated with finches and fruit in shades of green and mauve on green ground. Painted green initials W.M. H. 18.5cm.  
 \$150-250
- 294**  
**William Moorcroft Shouldered Cylindrical Vase**, decorated with clematises in shades of red and green on graduated blue and red ground. Impressed signature. Painted green initials W.M. H. 15.5cm.  
 \$200-300
- 295**  
**2002 Moorcroft Baluster Vase**, decorated with orchids in shades of green and pink. H. 16cm.  
 \$50-150
- 296**  
**2003 Moorcroft Cylindrical Vase**, decorated with tropical flowers in orange, green and mauve. H. 19cm.  
 \$50-150
- 297**  
**Moorcroft Ovoid Vase** with cylindrical neck. Decorated with poppies in shades of blue and mauve on graduated blue and green ground. Impressed signature. H. 12.5cm. A/f.  
 \$100-200
- 297A**  
**A Leather Suitcase c.1910**, belonging to Donald McRae ("Kipper" sales King of Scotland). Made by Sharman D. Neill, Belfast. 66 x 23cm. \$200-500
- 298**  
**Walter Moorcroft Baluster Vase**, decorated with frilled orchids in shades of yellow, mauve, blue and green on graduated blue and green ground. Impressed with signature. Painted blue initials W.M. H. 13.5cm.  
 \$150-250
- 299**  
**Walter Moorcroft Squat Vase**, decorated with frilled orchids and spring flowers in shades of yellow, mauve, blue and green on blue ground. Impressed signature. Painted blue initials W.M. H. 12cm.  
 \$150-250
- 300**  
**Walter Moorcroft Squat Vase**, decorated with poppies in shades of mauve, blue and green on blue ground. Painted blue initials W.M. H. 13cm.  
 \$150-250
- 301**  
**Moorcroft Squat Vase**, decorated with frilled orchids and spring flowers in shades of yellow, mauve, blue and green on graduated pale blue ground. H. 11cm.  
 \$100-200
- 302**  
**Walter Moorcroft Ovoid Vase** with flaring cylindrical neck. Decorated with frilled orchids and spring flowers in shades of mauve, blue and green on cream ground. Painted green initials W.M. H. 15.5cm.  
 \$150-250
- 303**  
**Moorcroft Solifluer Vase**, decorated with pink magnolias on blue ground. H. 21.5cm.  
 \$80-150
- 304**  
**Walter Moorcroft Ginger Jar & Lid**, decorated with clematis in shades of blue and mauve on graduated blue and green ground. Painted blue initials W.M. H. 15.5cm.  
 \$200-350
- 305**  
**Walter Moorcroft Ginger Jar & Lid**, decorated with hibiscus in shades of mauve and green on blue ground. Painted green initials W.M. H. 15.5cm.  
 \$200-350
- 306**  
**Moorcroft Ginger Jar & Lid**, decorated with clematis in shades of mauve and green on graduated blue and green ground. Original paper label. H. 15.5cm.  
 \$200-350
- 307**  
**Limited Edition 1990 Moorcroft Ginger Jar & Lid**, decorated with daffodils and spring flowers on dark blue ground. H. 15.5cm.  
 \$200-350
- 308**  
**Moorcroft Teapot & Lid, Milk-Jug & Sugar Basin**. Decorated with frilled orchids in shades of mauve, yellow and blue on graduated green ground. Impressed signature. H. 14cm.  
 \$400-550 (3)
- 309**  
**Pair of William John Moorcroft Tea Cups and Saucers**. Decorated with finches and berries in shades of mauve and green on a green ground. Painted green initials W.M.  
 \$100-200 (2)
- 310**  
**William Moorcroft Tea Cup & Saucer**, together with two cake plates (Dia. 16.5cm). Decorated with pomegranates in shades of mauve and ochre on blue ground. Painted blue initials W.M.  
 \$200-300 (3)
- 311**  
**Three Moorcroft Dishes**, decorated with spring flowers in shades of blue, pink and yellow on graduated blue and green ground, another decorated with a frilled orchid. Dia. 11cm.  
 \$150-250 (3)
- 312**  
**Two Walter Moorcroft Plates**, decorated with frilled orchids and spring flowers in shades of mauve, yellow and blue on blue ground. Painted blue initials W.M. Dia. 8.5cm, 22cm.  
 \$150-250 (2)
- 313**  
**William John Moorcroft Plate**, decorated with anemones in shades of mauve and green on blue ground. Painted green initials W.M. Signed and dated 19.9.97. Dia. 26cm.  
 \$150-250
- 314**  
**Moorcroft Oval Trough**, decorated with hibiscus in shades of mauve and yellow on blue ground. H. 8.5cm.  
 \$80-150
- 315**  
**Moorcroft Box & Lid**, decorated with a mauve anemone on graduated blue ground. Impressed signature. H. 5cm, W. 9cm, L. 12.5cm.  
 \$80-150





**316**  
**William Moorcroft Ovoid Vase** with cylindrical neck, decorated with pansies in shades of blue and mauve on blue ground. Painted green signature. H. 17.5cm. \$250-350

**317**  
**William Moorcroft Baluster Vase**, decorated with pansies in shades of blue and mauve on blue ground. Painted blue signature. H. 16cm. A/f. \$100-200

**318**  
**Walter Moorcroft Baluster Vase**, decorated with frilled orchids and spring flowers in shades of blue, mauve and yellow on blue ground. Impressed signature. Painted blue initials W.M. H. 18cm. \$150-250

**319**  
**William? Moorcroft Ovoid Vase** with cylindrical neck, decorated with anemones in shades of mauve and blue on blue ground. Impressed signature. Painted blue initials W.M. H. 22cm. \$300-500

**320**  
**William John Moorcroft Ovoid Vase** with cylindrical neck, decorated with hibiscus in shades of peach and green on green ground. Painted green initials W.M. H. 24cm. \$200-400

**321**  
**Walter Moorcroft Ovoid Vase** with cylindrical neck, decorated with poppies in shades of mauve on green ground. Painted green initials W.M. H. 24cm. \$300-500

**322**  
**Walter Moorcroft Solifleur** with cylindrical neck, decorated with hibiscus in shades of mauve, blue and yellow on graduated blue ground. Painted blue initials. Original label. H. 32cm. \$300-500

**323**  
**Moorcroft Shouldered Cylindrical Vase**, decorated with lilies in shades of mauve, ochre and green on graduated blue ground. H. 25.5cm. \$200-300

**324**  
**Walter Moorcroft Shouldered Cylindrical Vase**, decorated with spring flowers in shades of mauve, blue and yellow on cream ground. Painted green initials W.M. Original label. H. 21cm. \$100-200

**325**  
**William Moorcroft Baluster Vase**, decorated with pansies in shades of blue and mauve on graduated blue ground. Painted green signature. H. 23cm. \$200-300

**326**  
**Walter Moorcroft Shouldered Cylindrical Vase**, decorated with clematis in shades of mauve on cream ground. H. 19cm. \$150-250

**327**  
**Three Tall Cylindrical Polychrome Vases by Peter Viesnik**. H. 34cm, 32.5cm, 22.5cm. \$100-200 (3)

**328**  
**Modern Enamel Et Polychrome Vase**, with floral decoration. H. 46cm. \$50-150

**329**  
**Bourne Denby Danesby Ware Tall Vase c.1930s**, decorated with a flower and grass pattern. H. 23.3cm. \$50-100

**330**  
**Staffordshire Plate** decorated with blue and yellow irises. Dia. 24.5cm. \$20-50

**331**  
**Royal Doulton Figure "Tall Story"**, HN2248. H. 15.5cm. \$150-250

**332**  
**Royal Doulton Figure "The Lobster Man"**, HN2317. H. 18cm. \$150-250

**333**  
**Royal Doulton Figure "Shore Leave"**, HN2254. H. 19cm. \$150-250

**334**  
**Royal Doulton Figure "The Captain"**, HN2260. H. 24cm. \$150-250



297A

- 335**  
Royal Doulton Figure "Country Lass", HN1991. H. 20cm.  
\$100-200
- 336**  
Royal Doulton Figure "The Mask Seller", HN2103. H. 22cm.  
\$150-250
- 337**  
Royal Doulton Figure "The Rag Doll Seller", HN2944. H. 18cm.  
\$100-200
- 338**  
Royal Doulton Figure "Sea Harvest", HN2257. H. 19cm.  
\$150-250
- 339**  
Royal Doulton Figure "The Boatman", HN2417. H. 17cm.  
\$150-250
- 340**  
Royal Doulton Figure "The Cup of Tea", HN2322. H. 18cm.  
\$100-200
- 341**  
Royal Doulton Figure "Silk & Ribbons", HN2017. H. 15cm.  
\$100-200
- 342**  
Royal Doulton Figure "The Old Balloon Seller", HN1315. H. 19cm.  
\$150-250
- 343**  
Royal Doulton Figure "Balloon Lady", HN2935. H. 22cm.  
\$150-250
- 344**  
Royal Doulton Figure "The Balloon Man", HN1954. H. 18cm.  
\$150-250
- 345**  
Royal Doulton Figure "Biddy Pennyfarthing", HN1843. H. 23cm.  
\$150-250
- 346**  
Royal Doulton Figure "The Orange Lady", HN1973? H. 21cm.  
\$100-200
- 347**  
Royal Doulton Figure "Tuppence A Bag", HN2320. H. 13.5cm.  
\$100-200
- 348**  
Beswick Squirrel "Hazel Nutt", marked "David Hand's Animaland", H. 9.5cm.  
\$300-400
- 349**  
Mason's Ironstone Jug, "Manchu". H. 15cm.  
\$50-100
- 350**  
Mason's Fruit Basket Jug, face on handle. H. 13cm.  
\$50-100
- 351**  
Mason's "Chelsea Pattern" Coffee Pot. H. 18cm.  
\$50-100
- 352**  
Old Ironstone China Jug, H. 12.5cm. A/f.  
\$50-100
- 353**  
Mason's Jug, "Fruit Basket". H. 11cm.  
\$50-100
- 354**  
Majolica Staffordshire Fish Jug, Shorter & Sons. H. 15cm. Together with a Shancock and Sons Ltd. hand painted vase. H. 14cm.  
\$75-100 (2)
- 355**  
Doulton Autumn Leaf Decorated Vase. H. 28cm.  
\$200-300
- 356**  
Staffordshire Wilkinson Ltd. Bowl. Dia. 19cm.  
\$80-150
- 357**  
Royal Doulton Flori Jones Vase. H. 33cm.  
\$450-500
- 358**  
Wedgwood Biscuit Barrel, Adams Style. H. 17cm. A/f.  
\$30-50
- 359**  
Round Faced Scottish "Wag at the Wall" Clock, c. 1870, pendulum, weights and original receipt, d. 1987.  
\$300-500
- 360**  
Beswick Beatrix Potter's "Squirrel Nutkin". Gold stamp to based. H. 9cm.  
\$200-300
- 361**  
19th C. Brass Carriage Clock, Roman chapter dial (unmarked). H. 11cm.  
\$350-500
- 362**  
Hutschenreuther Robin Red Breast on sycamore branch. Green stamp. H. 12cm.  
\$50-100
- 363**  
Franklin Figure "Isabella of Spain". H. 19cm.  
\$20-40
- 364**  
Violoncello Bow by W.E. Hill & Sons of London. Stamped W.E.H. & S. In good structural condition with no cracks or damage and little playing wear.  
\$1000-3000
- 365**  
Gold? Golfing Pencil Brooch, with applied golf club motif and "QLGU". L. 8cm. In original box.  
\$50-100
- 366**  
Sterling Silver Cigar Box with Golf Motif. Maker Walker & Hall, Birmingham 1927. H. 4cm, D. 8cm, W. 9cm.  
\$100-200
- 367**  
Sterling Silver Golfing Trophy Box, inscribed "Bridge of Allan Golf Club/Vice Presidents Prize/Presented by James Dunlop Esqr" followed by six people who have won the prize. Birmingham 1896, maker Stokes & Ireland Ltd. H. 4cm, D. 7cm, W. 10cm.  
\$100-200
- 368**  
Silver Plate Toast Rack, with golf clubs criss-crossing to form rack. Maker J.D. & Co. Ltd. H. 14cm.  
\$100-200
- 369**  
Sterling Silver Pin Dish with golfing motif, glass bottom. Birmingham 1902, maker Synyer & Beddoes. Dia. 6.5cm.  
\$50-100





- 370**  
**Sterling Silver Golf Trophy**, inscribed "C.G.C/1936/Cox Cup/A.D. Tench". Birmingham 1928, maker J & C?. \$20-40
- 371**  
**Sterling Silver Golfing Teaspoon**, with iron to terminal. \$40-80
- 372**  
**Three Dunlop 65 Golf Balls**, in original wrapping and packaging. \$40-80
- 373**  
**20th C. Copeland Spode Golfing Tankard.** Bulster body decorated with white relief moulded panels of golfers, against a celadon green ground, flanked by riding crop handle. Painted factory mark to base. H. 18cm. \$200-300
- 374**  
**Four Arthur Woods Sports Series Golfing Tankards**, with golf bag handles. H. 13cm. \$50-100 (4)
- 375**  
**Four Pieces of Poole Tableware.** \$20-40
- 376**  
**Set of Six Dresden Demi-Tasse Cups & Saucers.** \$100-200 (6)
- 377**  
**Franklin Figure "Catherine the Great".** H. 19.5cm. \$20-40
- 378**  
**Royal Worcester Coffee Cup & Saucer.** Decorated with autumn fruits on mossy ground and gilt, signed R. Rushlur? H. 5cm. \$20-40
- 379**  
**Franklin Figure "Elizabeth I".** H. 20cm. \$20-40
- 380**  
**Maling Ware Plate c. 1930s**, brightly decorated with yellow windmill and pink flowers on blue ground. \$80-120
- 381**  
**No Lot**
- 382**  
**Six Webb Corbett "Georgian" Crystal Stemmed Lager glasses.** H. 16cm. \$800-100 (6)
- 383**  
**Six Webb Corbett "Georgian" Crystal Whisky Glasses.** Together with a Webb Corbett "Georgian" crystal water jug. H. 13.5cm (jug), 9.5cm (glasses). \$100-150 (7)
- 384**  
**Two Webb Corbett "Georgian" Crystal Sweet Dishes.** \$30-50 (2)
- 385**  
**Pair of Crystal Salt & Pepper Shakers.** H. 6cm. \$20-40 (2)
- 386**  
**Pair of Ivory Binoculars & Case.** Inscribed "Exposition de Londres 1851" (in reference to the Great Exhibition of the Works of Industry of all Nations, London 1851). A/f. \$200-500
- 387**  
**Oak Children's Stick Back Chair.** H. 59cm. \$50-100
- 388**  
**19th C. Three-Draw Brass Telescope**, with leather covered body tube, sliding eyepiece dust cap, and case (damaged). L. 41cm fully extended. \$50-100
- 389**  
**Nine Assorted Dolls**, including porcelain, plastic and knitted figures. \$30-50 (9)
- 390**  
**Large Collection of Painted Lead Figures**, story book animal figures, elephants and school children etc. In wooden box. \$100-150
- 391**  
**Child's "Bonanza" Metal Lunchbox by Aladdin.** "Safety First" poem stamped to inside lid. \$50-80
- 392**  
**Horse & Jockey Metal Painted Wind-Up Toy**, stamped with Mikuni trade mark. \$50-80
- 393**  
**Early 1970s Japanese Spaceship X-7 Toy & Original box.** Made by Masudaya Modern Toys. Made of metal and plastic with flashing lights and revolving antenna. In working order (box damaged). \$50-100
- 394**  
**Metal Gyroscope**, together with small leather cap/hat box. \$20-40
- 395**  
**1950-1960s Green Telephone**, possibly used in a Government department. \$50-100
- 396**  
**Large Carved African Ivory Tusk** depicting various African animals in relief, c. 1900. Provenance: Brought to the Island of Madeira by African labourers c.1900; acquired by current owner c.1960s. L. 90cm. \$1100-1300
- 397**  
**Price of Wales & Diana Plate**, together with various books about the Royal family, woman's magazines featuring Princess Diana, etc. \$40-80
- 398**  
**Earthenware Greek-style Vase** decorated with fish and ships in red and brown tones. H. 21.5cm. \$20-40
- 399**  
**Earthenware Planter Pot on Three Legs** with two small handles. Decorated with cherry blossom tree and painted graduated green and brown. H. 23cm. \$20-40
- 400**  
**Royal Doulton "Beggars Cup".** Comes with letter from Royal Doulton UK, dated 23 March 2002, stating that there is only one other known cup like this in the world. H. 22.5cm. \$300-600
- 401**  
**Large "M.R. & Co./Napier" Stone Crock.** H. 52cm. A/f. \$80-120
- 402**  
**Large Chemist Jar With Lid Stopper.** H. 68cm. \$200-400

- 403**  
**Wedgwood "Woodbury" Dinner Set For Six** comprising cups, saucers, bowls, plates, gravy bowl etc.  
\$80-120
- 404**  
**Bakelite Magnifying Glass & Lidded Container.**  
\$50-100 (2)
- 405**  
**Two Stereoscopes & Cards c. 1901,** manufactured by Underwood & Underwood, New York, and a leather cased photo frame, photo faded.  
\$150-200 (4)
- 406**  
**Silver Plate & Glass Fruit Bowl** with cupid decoration on the circular handle. H. 32cm.  
\$100-200
- 407**  
**Pair of Worked Victorian Face Screens.** H. 54cm.  
\$75-100 (2)
- 408**  
**Roseville U.S.A. Blue Vase, Zephyr Lily, c. 1940, "202-8".** H. 21cm.  
\$100-300
- 409**  
**Framed Oil Portrait of a Baby Seated** on a feather cloak.  
38 x 30cm.  
\$200-300
- 410**  
**Photographic Portrait of a Baby,** Brandon Haughon, Hawera. On reverse, a certificate, "New Plymouth Carnival and Exhibition of Art and Industries, 1904, awarded to Master Leonard Robb, 3rd Prize".  
30 x 24cm.  
\$75-100
- 411**  
**Gouda "Rhodian" Pattern Plate.** Dia. 27cm. A/f.  
\$50-75
- 412**  
**Staffordshire Adams Meat Dish.**  
\$20-40
- 413**  
**Hand Painted Winton Vase by Bailes.** H. 33.5cm.  
\$200-300
- 414**  
**Hand Painted Winton Vase** by J. Wencker. H. 31cm. A/f.  
\$50-100
- 415**  
**Maling Dish,** floral. L. 20.5cm.  
\$50-100
- 416**  
**Royal Doulton Square Sandwich Plate, Tom Pinch.**  
\$50-100
- 417**  
**Royal Doulton Plate, Sairey Gamp.**  
\$50-100
- 418**  
**Grindley "Harmony" Turkey Plate.** L. 43cm.  
\$40-60
- 419**  
**Royal Doulton Figure, "Miss Demure",** H. 18.5cm. Together with a Royal Worcester Bowl, signed, Dia. 11.5cm. A/f.  
\$50-70 (2)
- 420**  
**Two Bretby Plaques, "Weller" & "Sam Weller".** 25.5 x 23cm.  
\$100-200 (2)
- 421**  
**Clock & Two Plates Marked "Moonlight Ware", "Made in England",** painted blue with black and gold oriental seascape design. Clock H. 23.5cm, plates Dia. 21cm.  
\$40-80 (3)
- 422**  
**Two Royal Worcester Dishes** hand painted with autumn fruits on mossy ground. One oval L. 13.5cm, other Dia. 12cm.  
\$40-80 (2)
- 423**  
**Royal Worcester Lidded Jar (Potpourri).** Hand painted with summer fruits, signed Johnson. H. 13cm.  
\$250-350
- 424**  
**Royal Worcester Lidded Jar (Potpourri).** Hand painted with autumn fruits, artist H. Henry. H. 17cm.  
\$400-500
- 425**  
**Small Royal Worcester Vase** painted with autumn fruits. H. 8.5cm. Together with Royal Worcester candle snuffer in the shape of a hat.  
\$40-80 (2)
- 426**  
**Rare Collection of Four New Zealand Railway Cups & NZR Saucer.** Cups made by Maddock England, saucer by Crown Lynn New Zealand. A/f.  
\$50-100 (5)
- 427**  
**A Murano Glass Venetian Style Mirror** with decorative glass frame. Purchased in Venice. H. 44cm. A/f.  
\$200-400
- 428**  
**A Murano Glass Italian Style Mirror** with decorative glass frame. Purchased in Venice. H. 39cm.  
\$200-400
- 429**  
**A French Plaster Figure of St Theresa** H. 32cm.  
\$20-50
- 430**  
**A French Alabaster Table Lamp** in the form of a Grecian Urn. H. 19cm.  
\$50-150
- 431**  
**A Louis XV Style Porcelain Teapot & Matching Sugar Bowl (with no lid).** A/f.  
\$20-50 (2)
- 432**  
**A Pair of French Brass Five Light Candelabra in the Rococo Style.** A/f.  
\$600-1000 (2)
- 433**  
**An Italian Lidded Pedestal Soup Tureen** in the Cape de Monte style. A/f.  
\$80-150
- 434**  
**A Sevres Pierced Sweet Dish** supported by two cupids, applied floral decoration. L. 43cm.  
\$500-1000
- 435**  
**Two Parasols with Floral Fabrics.** One with green fabric, wooden and resin handle, L. 87cm. The other with maroon fabric, silver plate floral-designed handle, L. 78.5cm.  
\$50-100 (2)
- 436**  
**Royal Worcester Jug** hand painted by William Powell with white flamingos in forest scene, on apple green ground, date code for 1903. H. 28.5cm.  
\$2500-4500

- 437**  
**Royal Worcester Wall Pocket** of two shells with red coral/seaweed growing around them. Date code for 1883. L. 27.5cm.  
\$400-800
- 438**  
**1939 Compass Camera & Accessories.**  
Camera with blue box and also roll film back, Cubitt & Son Roll film adaptor, carry case with lid and strap, leather plate holder, Dallan developing tank with plate and roll film inserts, Doeskin sheath, carrying chain, cable release, instruction book, leather strap, various price lists/guarantee/letter etc., quantity of roll film containers/films, unused compass plate and unused Ilford plate.  
\$4000-6000
- 439**  
**A Selection of Stamps including NZ War Stamps** and two others.  
\$20-40
- 440**  
**Collection of Stamps in Two Boxes** and two albums.  
\$20-40 (4)
- 441**  
**Five Loose Pages of Autographs (Signatures)** of well known identities. Includes L. Harris, Zola, Dumas, Verne, J.A. Froude, G.B. Shaw, P.T. Barnum, H. Irving and J.L. Toole.  
\$100-300
- 442**  
**Letter d. 1969 signed by Charles De Gaulle to Monsieur Georges Vavon,** and a photo of President Roosevelt with an envelope (no contents).  
\$50-100 (3)
- 443**  
**Poster - James Bond 007 "Moonraker" 1979.** 104 x 68.5cm.  
\$50-100
- 444**  
**Container with War Ration Stamps - Petrol** etc.  
\$20-40
- 445**  
**Cast Iron & Brass Set of Scales** with weight.  
\$100-300
- 446**  
**Set of Johnston & Hendon Jeweller's Scales,** with weights.  
\$100-200
- 447**  
**Boxed Matchbox Toy, Y-23** 1922 Aecomnibus.  
\$50-100
- 448**  
**Boxed Matchbox Toy, Y12** Model T Ford Truck.  
\$50-100
- 449**  
**Boxed Matchbox Toy, Y19,** 1929 Morris Cowley Van.  
\$50-100
- 450**  
**Brass Candlestick & Brass Pourer, Wall Mounting.**  
\$40-60 (2)
- 451**  
**Three Old Diaries,** Including Press Clippings, etc. of Harington/Hughes Family, NZ Solicitor 1930, including letter to Sir John Monash, Sydney regarding WWI and old legal documents.  
\$50-100 (3)

## ORIENTAL

451A

### Anglo-Indian Table, India, c. 1830.

Anglo-Indian tilt-top centre table of carved and pierced padouk (wood-type similar to Rosewood), having an octagonal top with foliate carving contained within a beaded border, overhanging and scalloped apron with intricate carved scrolling flowers, birds and foliate, the base with carved beasts and animals amid foliate designs, Bombay or Goa. H. 71cm.

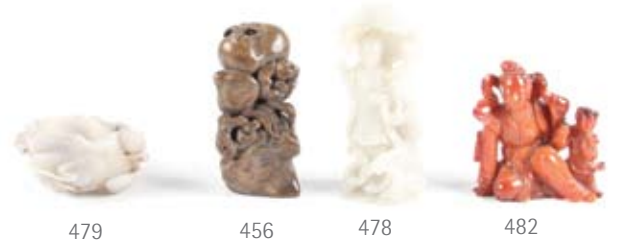
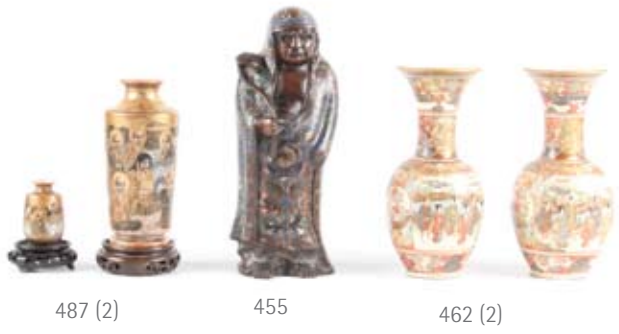
Note: One snakehead is missing, one requires re-gluing and a little piece of the edge of the frieze is missing.

Provenance: Once in the possession of an English Medical Officer working for the British Army in India, c. 1830s.

\$800-1500



451A



- 452**  
**Meerschau Pipe & Case.** Missing stem.  
\$50-100
- 453**  
**Modern Chinese Blue & White Moonflask,**  
Qiahong mark, wood case.  
\$200-300
- 454**  
**Chinese Blue & White 'Dragon' Baluster**  
**Vase,** late 19th-early 20th C., Chonghua mark.  
\$200-300
- 455**  
**Chinese Cloisonné Enamel Figure** of an  
immortal holding a ruyi sceptre, illegible mark  
to base. 19th-early 20th C., fatigue to bronze  
interior, losses to enamels.  
\$150-250
- 456**  
**Large Chinese Hardstone Seal,** carved with  
pomegranate and finger citron. 20th C. with  
later incised inscriptions. Chipping, natural  
flaws to stone. A/f.  
\$50-100
- 457**  
**Chinese Lacquer Box,** with two drawers and  
a mirror, 20th C. Dated to 1978.  
\$100-200
- 458**  
**Japanese Imari Bowl,** 20th C. Cracked. A/f.  
\$50-100
- 459**  
**Blue & White Bottle Vase,** later copy, 20th C.  
\$200-300
- 460**  
**Five Chinese Blue & White Bowls,** 17th C.  
and later. Cracks, chips. A/f.  
\$100-200
- 461**  
**Thai Silver Repousse Bowl,** 19th-20th C.  
vordieris.  
\$50-100
- 462**  
**Pair of Japanese Satsuma Vases,** early 20th  
C. Marks to bases, both with restored chips to  
top rim and neck. A/f.  
\$200-300
- 463**  
**Thai Bronze Seated Buddha,** 19th-20th C.  
\$300-500
- 464**  
**Japanese Ivory Figure,** first half 20th C. with  
split and cracks. A/f.  
\$100-300
- 465**  
**Chinese Blue & White Bowl,** auspicious mark  
to base, provincial, Ming Dynasty (1368-1644),  
old chipping to foot rim and minor chip to top  
rim. A/f.  
\$50-100
- 466**  
**Chinese Provincial Blue & White Bowl,**  
provincial Ming. Cracks. A/f.  
\$40-60
- 467**  
**Thai Silver Repousse Bowl,** 19th-20th C.,  
resoldering to base.  
\$50-100
- 468**  
**Chinese Green Glazed Hexagonal Teapot,**  
provincial, late 19th-early 20th C. Chipping to  
spout edges and restoration to one top corner  
and part of handle. New wood lid. A/f.  
\$100-200
- 469**  
**Chinese Bronze Handled Tripod Censer,**  
inscription to base, late 19th C., polished.  
\$200-300
- 470**  
**Thai Bronze Seated Buddha,** later copy.  
\$100-200
- 471**  
**Thai Bronze Seated Buddha,** later copy.  
\$100-200
- 472**  
**Chinese Bronze Figure of Guanyin,** Ming  
style/later copy.  
\$100-200
- 473**  
**Chinese Bronze Figure of a Bodhisamua,**  
heavy vordieris and losses, Ming style/later  
copy.  
\$60-100
- 474**  
**Pair of Chinese Bronze Vases** with bamboo  
handles. Probably 19th C. Restoration to necks.  
A/f.  
\$150-250 (2)
- 475**  
**Chinese Bronze Figure Group,** later copy.  
\$40-60
- 476**  
**Chinese Bronze Figure of a Dignitary.** Ming  
style/later copy.  
\$100-200
- 477**  
**Chinese Bronze Figure of Guanyin,** probably  
17th-18th C., ruyi sceptre chipped. A/f.  
\$300-600
- 478**  
**Chinese Pale Celadon Jade Figure of a**  
**Sea Deity.** 20th C. Very minor chipping and  
inclusions to stone. A/f.  
\$600-1000
- 479**  
**Chinese Grey Celadon Jade Brushwasher,**  
20th C.  
\$200-300
- 480**  
**Thai Gilt Lacquered Bronze Buddha,** later  
copy.  
\$80-120
- 481**  
**Thai Gilt Lacquered Bronze Buddha,** later  
copy.  
\$80-120
- 482**  
**Chinese Carhellah Carving Group** of a lady  
and a boy, 20th C.  
\$100-200
- 483**  
**Chinese Carved Quartz Stand,** wooden base  
(missing a foot), 20th C. A/f.  
\$20-50
- 484**  
**Four Small Chinese Jade Carvings,** a small  
Buddhistic lion seal and an ink box, 20th C.  
\$100-300
- 485**  
**Modern Chinese Blue & White Dragon Jar,**  
Ming style. Chenghua mark to base.  
\$200-300
- 486**  
**Chinese Handled Jar & Cover,** modern copy,  
cracks. A/f.  
\$100-200
- 487**  
**Two Japanese Satsuma Vases,** wooden  
stands, signed, early 20th C.  
\$200-300 (2)

- 488**  
Two Chinese Ming – style Black & Grey Celadon Archer Rings. Chipping and flaws. A/f.  
\$100-200
- 489**  
Chinese Ming – style Jade Carving of a Recumbent Elephant.  
\$80-150
- 490**  
Chinese Pale Celadon Jade Model of a Finger Citron Spray, early 20th C. Minor losses and flaws. A/f.  
\$100-200
- 491**  
Chinese Russet Celadon Jade Plaque (possibly from a larger piece), 20th C. Cracks and flaws to stone. A/f.  
\$80-150
- 492**  
Chinese Russet Celadon Dragon & Carp Plaque, 20th C. Flaws to stone. A/f.  
\$200-300
- 493**  
Green Jade Axe.  
\$100-200
- 494**  
Pair of Chinese Under Glaze Copper Red Bowls, modern copies.  
\$50-100 (2)
- 495**  
Chinese Blue & White Stem Cup, Xuande mark but modern copy. A/f.  
\$30-60
- 496**  
Chinese Blue & White Dish, modern copy with cracks.  
\$80-150
- 497**  
Chinese Blue & White Vase applied dragon and butterfly to rim. H. 25cm.  
\$200-300
- 498**  
Ten Japanese Gilt & Enamel Porcelain Dishes, 20th C., signed, cracks and flaws. A/f.  
\$150-250 (10)
- 499**  
An Ivory Letter Opener with gilt and enamel bird and foliage decoration. L. 36.5cm.  
\$50-100
- 500**  
Carved Ivory Walking Cane Handle in the form of a bird holding a snake in its beak. L. 23cm (not including screw).  
\$100-200
- 501**  
Japanese Netsuke Figure Holding a Jug. H. 5cm.  
\$20-40
- 502**  
Japanese Netsuke Figure of a Monk? H. 5cm.  
\$20-40
- 503**  
Small Piece of Japanese Carved Ivory in the form of a mask? H. 3cm.  
\$20-40
- 504**  
Two 19th C. Japanese Ivory Carved Whist Counters featuring monkeys and miniature piano keys that snap up and down. L. 9.5cm, W. 6cm.  
\$50-100 (2)
- 505**  
Carved Chinese or Japanese Ivory Paper Weight set in wood, depicting a village mountain scene. Signature inscribed. L. 17.5cm, W. 2.5cm.  
\$50-100
- 506**  
Japanese Carved Bone Figure of a Turtle. L. 8.5cm (head to tail). A/f.  
\$50-80
- 507**  
Japanese or Chinese Carved Bone Pocket Knife or grooming kit? with picks and a fine comb on swivel. L. 9cm.  
\$50-80
- 508**  
Carved Bone Sculpture in the form of a Monkey's Skull, together with a carved wooden skull and skeleton figure. H. 5cm. A/f.  
\$30-50 (3)
- 509**  
Large Piece of Natural Ivory in Two Parts, L. 17cm, H. 7.5cm.  
\$30-50
- 510**  
Shan Long – Mountain Landscape. Ink and colour on paper. 66 x 133cm.  
\$100-300
- 511**  
Nguyen Dinh Dang (Vietnam/Japan). Pole houses over water. Watercolour 52 x 67cm.  
\$100-300
- 512**  
Zheng Naiguang – White Eagle. Ink and colour on paper. 128 x 66cm (scroll length 191 cm).  
\$5000-10,000
- 513**  
Jie Ting – 100 Horses. Ink and colour on paper. 112 x 60cm.  
\$500-900
- 514**  
Framed Japanese Woodblock Print - Two Scenes, Samurai and Geisha watching procession. Both 36 x 23cm.  
\$100-300
- 515**  
Early 20th C. Japanese Woodblock Print. Men at leisure. 23 x 35cm.  
\$100-150
- 516**  
Early 20th C. Japanese Woodblock Print. Travellers with oxen. 22 x 34cm.  
\$100-150
- 517**  
Early 20th C. Japanese Woodblock Print. Cherry Blossom with walkers. 22 x 34cm.  
\$100-150
- 518**  
Early 20th C. Japanese Woodblock Print. Travellers walking and eating. 22 x 34cm.  
\$100-150
- 519**  
Early 20th C. Japanese Woodblock Print. Travellers arriving at a village. 22 x 34cm.  
\$100-150
- 520**  
Pair of Oriental Vases. H. 32cm.  
\$20-40 (2)
- 521**  
Pair of Oriental Vases. H. 32.5cm, 30.5cm.  
\$20-40 (2)





522

**Japanese Tea Set**, comprising teapot, sugar jar, two cups and saucers, five plates.  
\$40-80 (9)

523

**WWII Japanese Tea Service Set**.  
Comprising teapot, sugar jar, milk jug, four cups, five saucers, six plates. Decorated with dragon on green ground and gilt.  
\$40-80

524

**Japanese Woodblock Print, Utagawa Toyokuni (Toyokuni 1) 1769-1825**. The Great Master of Ukiyo-e and known particularly for his Kabuki Actor portraits. He was the head of the Utagawa School and responsible for moving it into a position of great power in the 19th C. 36 x 23cm.  
\$200-400

525

**Framed Japanese Woodblock Print, Kunisada (Toyokuni 3) 1786-1865**. The star pupil of Toyokuni 1 and was originally apprenticed to him in 1800. In 1844 he adopted the name of his master and became head of the Utagawa School. Together with Hiroshige and Kuniyoshi they were considered the finest Japanese print artists at the end of the Edo period.  
16.5 x 21cm.  
\$150-300

526

**Framed Japanese Woodblock Print**. Description as per previous lot.  
16 x 21cm.  
\$150-300

527

**Framed Japanese Woodblock Print**. Description as per previous lot.  
34 x 23cm.  
\$175-250

528

**Framed Japanese Woodblock Print, Sakai Hoitsu, 1761-1828**. The son of the Lord of Himeji Castle and studied various styles under famous masters because of his lifestyle, he became a monk in 1797 and spent 21 years in seclusion where he particularly studied Ogata Korin. He was the principal driving force responsible for the rinpa revival in the early 19th C. His contribution to the art is considered major by scholars and his original prints are quite rare.  
33.5 x 14cm.  
\$150-200

529

**Rare Hand painted Silk Scroll, "Kakejiku", Edo Period, Tosa School by Tosa Mitsuyoshi 1700-1770**, with original ivory weight at base and silk brocade strips at top. The Tosa School was founded in the 15th C. and became an official art school of the Imperial Court in Kyoto. Quails as a painting subject were a specialty and its paintings employed delicate brushwork and colouring. The translation says Fujiwara Mitsuyoshi (Major 5th rank in service to the court). The scrolls are painted on silk. A similar painting by Tosa Mitsusada son of Mitsuyoshi is held in the British Museum. Tosa Mitsuyoshi was head of the Tosa School.  
L. 175cm W. 44cm.  
(2 Quails).  
(One original box which holds the two scrolls.)  
\$500-700

530

**Rare Hand painted Silk Scroll, "Kakejiku", Edo**. Description as per previous lot.  
L. 175cm W. 44cm.  
(1 Quail).  
(No box).  
\$500-700

531

**Massive 19th C. Cloisonné Charger** of plain circular form decorated with a multitude of cranes on sky blue ground with ornate polychrome border (some damage), 91.5cm Dia.  
\$4000-6000



529

530



531

- 532**  
**Antique Japanese Bronze Kagami Hand Mirror**, decorated in relief depicting cranes and a turtle near water, under a pine tree. These mirrors were used until the end of the Edo period (1615-1868), cane bound handle. Dia. 24cm.  
\$100-300
- 533**  
**Kagami Hand Mirror**, Brass, later period, cane bound handle.  
\$50-100
- 534**  
**Chinese Antique Tortoise Shell Box**, possibly Cantonese crafted. Cover depicting a village scene and boat in foreground. Dia. 9cm. A/f.  
\$200-300
- 535**  
**Pair of Signed Jade Slippers** (perhaps for incense burners). L. 8.5 cm.  
\$75-150 (2)
- 536**  
**Soapstone Seal**, single character, and decoration of man riding a horse. H. 10cm.  
\$50-100
- 537**  
**Oriental Travelling Hanging Double Spouted Kettle**. L. 25cm. H. 15cm.  
\$50-100
- 538**  
**Brass Chinese Candle Lantern**, early to mid 20th C., fretwork decoration, hand blown glass. H. 17cm.  
\$100-200
- 539**  
**Chinese 20th C. Boxwood Carved Figure of a Scholar**. H. 10.5cm.  
\$75-150
- 540**  
**Two Chinese, Early 20th C. Brush Pots**. H. 21.5 cm, 15cm.  
\$50-100 (2)
- 541**  
**Japanese Kogai**, iron panel with bird decoration and inset into a gilded body. L. 20.5cm.  
\$150-200
- 542**  
**Japanese Kodzuka**. L. 21cm.  
\$150-200
- 543**  
**Bronze Japanese Plaque**, Meiji Period, decoration of dancing figures, concave. Dia. 22cm.  
\$80-150
- 544**  
**Carved Chinese Wooden Statue of a Fisherman** and his catch. H. 30cm.  
\$200-300
- 545**  
**Japanese Kurikata**. (Prevents scabbard slipping through sash).  
\$40-60
- 546**  
**Two Japanese Kiseru Pipes**. Both of hollow bamboo and bronze fittings, one with decorated mouth piece. L. 24 and 30cm.  
\$75-150 (2)
- 547**  
**Japanese Edo Period Pierced Iron Tsuba**, crane and tortoise (long life) decoration, with blossom and bamboo. Weight 112g, Dia. 8cm.  
\$300-500
- 548**  
**Japanese Edo Period Tsuba**, woodgrain pattern, iron, alloy and silver. Weight 70g, Dia. 6.5cm.  
\$150-200
- 549**  
**Heavy Iron Tsuba**, Possibly Chinese, perhaps cast?, mystical decoration. Weight 173g, Dia. 8cm.  
\$150-200
- 550**  
**Japanese Early Iron Tsuba**, depicting Daruma meditating in a cave, of iron, gold and bronze. Weight 92g. Rounded rectangular shape, 6 x 7cm.  
\$150-200
- 551**  
**Japanese Iron Tsuba**, square shape, rounded edges, mountain decoration. Weight 136g, H. 6.5cm.  
\$150-200
- 552**  
**Framed Japanese Woodblock Print**. 24 x 18cm.  
\$50-100
- 553**  
**Framed Japanese Woodblock Print**. 24 x 18cm.  
\$50-100
- 554**  
**Two Japanese Menuki**, one of a dragon and the other of flying cranes.  
\$50-100 (2)
- 555**  
**Three Japanese Netsuke (Resin)**.  
\$50-100 (3)
- 556**  
**Chinese Knife Sheath & Chopstick Trousse Travel Kit (bone)**. Incised floral decoration. L. 30cm.  
\$100-300
- 557**  
**Chinese Knife Sheath & Chopstick Trousse Travel Kit (tortoiseshell)**. Fine chopsticks and toothpick of bone. L. 27.5cm. A/f.  
\$100-300
- 558**  
**Chinese Knife Sheath & Chopstick Trousse Travel Kit (bamboo lacquer-style)**. Fine chopsticks and toothpick of bone. L. 27cm.  
\$100-300
- 559**  
**Chinese Knife Sheath & Chopstick Trousse Travel Kit (decorated ivory)**. Fine chopsticks and toothpick of bone. L. 32cm. A/f.  
\$100-300
- 560**  
**Chinese Knife Sheath & Chopstick Trousse Travel Kit**. Knife with horn handle, bone chopsticks. Sheath very ornate, silver metal set with coral stone? and dragon motif. L. 29cm.  
\$100-300
- 561**  
**Lady's Knife Sheath & Chopstick Trousse Travel Kit**, fine metal chopsticks, timber and metal sheath. L. 15cm.  
\$50-100
- 562**  
**Korean Woman's Dagger & Chopstick Trousse Travel Set**, with leaf decoration over the two chopsticks together. L. 14.5cm.  
\$50-100
- 563**  
**Japanese Fan Tanto in Koshirae**, simulating a folding Japanese fan. Legend has it that this style of mounting was used by women and retired Samurai, etc. to hid the fact of carrying a weapon. Attached double face ojimi bead. L. 31cm. A/f.  
\$150-300

**564**  
**Chinese Bone Dagger in Bone Sheath**,  
 incised and relief decoration. L. 41cm.  
 \$200-400

**565**  
**Tibetan Dagger with Horn Handle.** L. 54cm.  
 \$200-400

**566**  
**Balinese Curio, Kris-style**, perhaps a letter  
 opener. L. 24.  
 \$40-60

**567**  
**Wooden Sheathed Kris** (Malaysian?) with  
 partially carved handle. Etched blade (watered  
 effect), where alternate layers of metals are  
 used and then etched with lime juice and acid.  
 L. 50cm.  
 \$350-500

**568**  
**Chinese Coin Sword** - "Spirit Sword",  
 fashioned from threaded and tied Chinese  
 coins. Feng Shui Sword for Protection from  
 Negative Energy, wrapped handle. L. 51cm. A/f.  
 \$100-300

**569**  
**Tibetan Bronze Phurba Ritual Kartika Axe**  
**of Iron and Bronze.** Sometimes called a  
 "magic dagger/axe", a ritual object used to  
 destroy ignorance and leads to enlightenment.  
 L. 34cm.

The Kartika symbolises the severance of all  
 material and worldly bonds and is crowned  
 with a Dorje, which is said to destroy  
 ignorance, and leads to enlightenment. In  
 Buddhist teachings, this tool is sometimes held  
 in the right hand of Yama, the conqueror of  
 death. It is also the 'Axe' of Parashurama in  
 Hindu Sanatana Dharma.  
 \$300-500

**570**  
**Malayan Jungle Knife (Golok) with Bone**  
**Handle.** Bamboo and metal sheath. L. 29cm.  
 \$150-300

**571**  
**Japanese Framed Woodblock Print** in very  
 heavy black frame. 37 x 25cm.  
 \$170-350

**572**  
**Framed Painting on Fine Linen of a Chinese**  
**Man** smoking an ivory pipe. Signed. A/f.  
 38 x 29cm.  
 \$300-500

**573**  
**Qi Baishi? (1864-1957), Chinese.**  
 Shrimp.  
 Watercolour on paper on silk scroll.  
 Signed and inscribed with poetry.  
 134 x 34cm.

Qi Baishi is a noted painter for his whimsical,  
 playful style. He was influenced by the Qing  
 Dynasty painter Bada Shanren and the Ming  
 Dynasty painter Xu Wei. He painted mostly  
 animals, shrimp being amongst his favourite.  
 \$5,000-10,000

**574**  
**Chinese Leather Pillow.**  
 W. 27cm.  
 \$200-400



573



513



574



564



532



533



563



550

548

549



547

551



534

559



560



557



558



546 (2)



541



542



565



561



562



568



569



572

570



543

556



# ANTIQUARIAN BOOK & AUTOGRAPH AUCTION 24 NOVEMBER



**To include: Antiquarian  
Des Scholum Signed Historic Documents,  
Signatures & Autograph Collection  
NZ Historical  
Maori History, Language & Customs  
Military  
Sport, Leisure & Pastimes  
Travel & Exploration  
Natural History  
South Africa  
Literature  
Art & Antiques  
Literature, Childrens & Illustrated**

**Full details & catalogue online**

**[www.dunbarsloane.co.nz](http://www.dunbarsloane.co.nz)**

**Ph: 04 472 1367**

**email: [info@dunbarsloane.co.nz](mailto:info@dunbarsloane.co.nz)**

**Catalogue available \$20 PO Box 224 Wgtn  
7 Maginnity St, Wellington CBD**